

Proestrus*

- Very swollen
- Pink
- Moist
- Wrinkling

Estrus*

- Less swollen
- Less pink
- Less moist
- Wrinkling

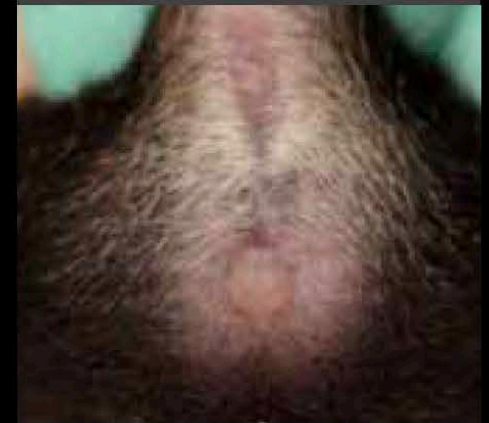
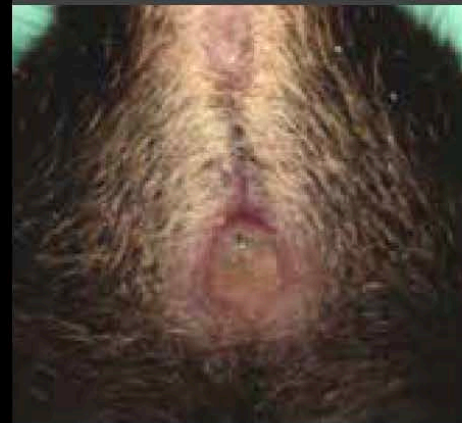
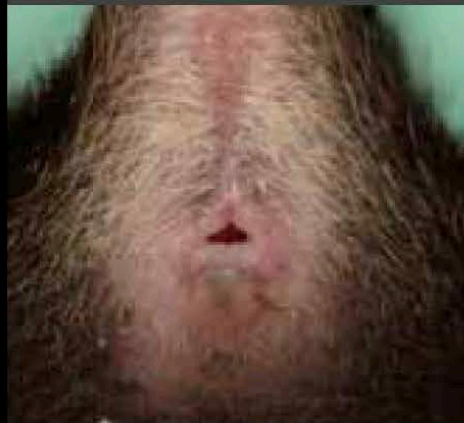
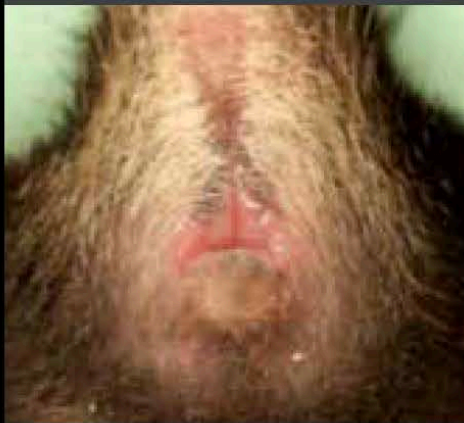
Metestrus

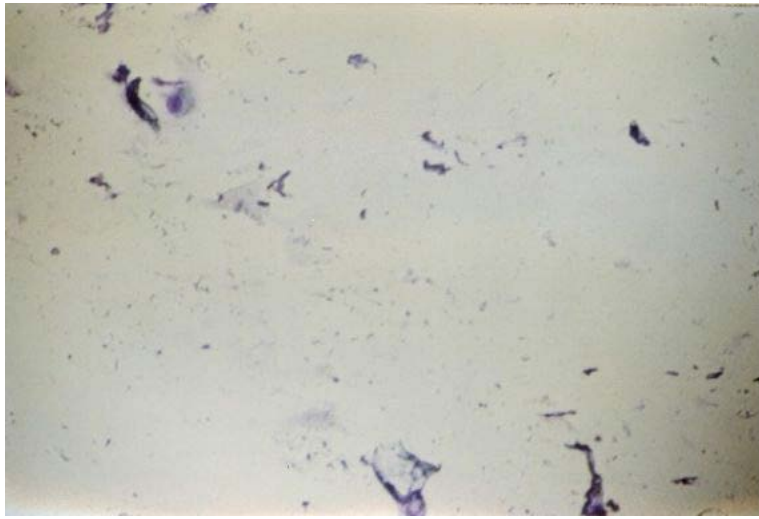
- Not swollen
- Not pink
- Dry
- No wrinkling

Diestrus

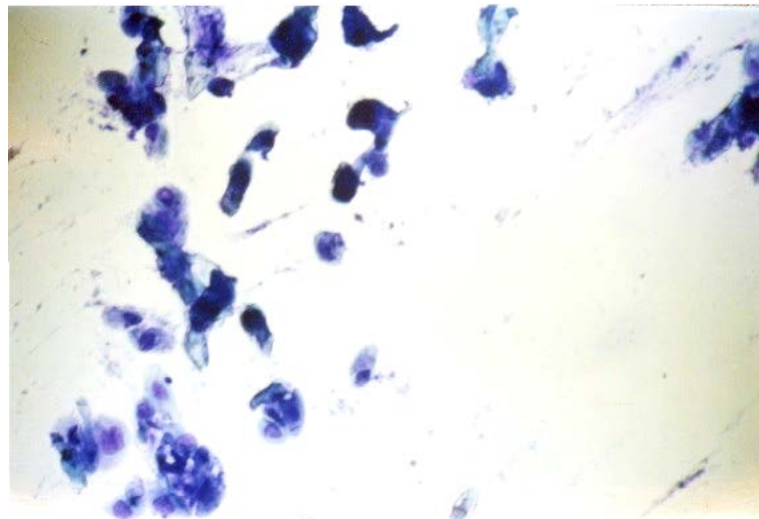
- Not swollen
- Not pink
- Dry
- No wrinkling

*** Stages most receptive to mating**





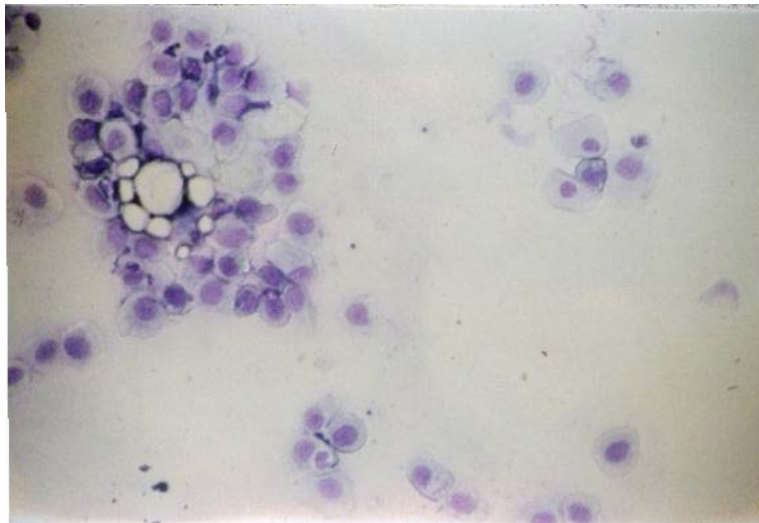
- D**
- traces of secretory material with cellular debris.
 - Few parabasal and intermediary cells
 - Few L in swab smears / predominantly L in vaginal lavage



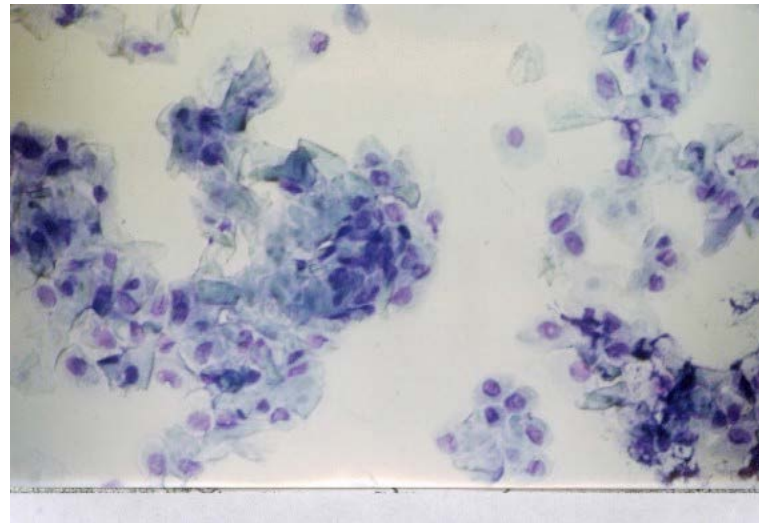
- D → P**
- More mucus often as thick strands or discs
 - parabasal irregular or shrunken cells
 - some intermediary cells
 - Fewer L



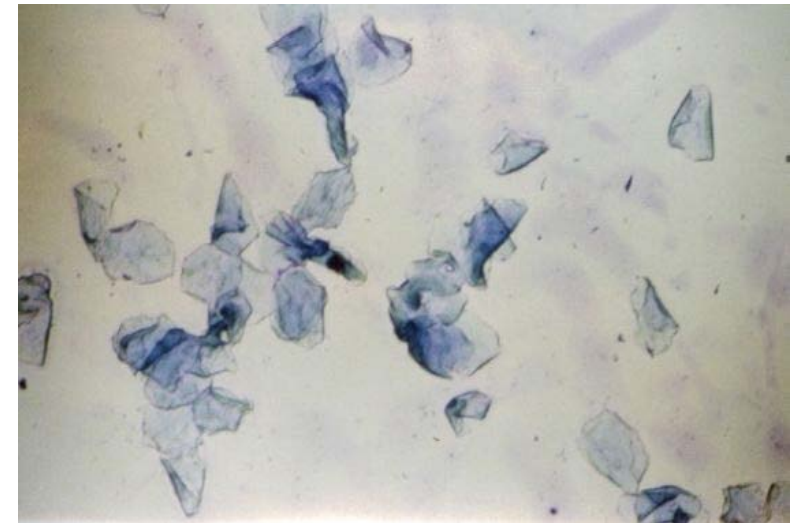
- Early P**
- Less mucus and some debris
 - More parabasal and intermediary cells
 - L are rare



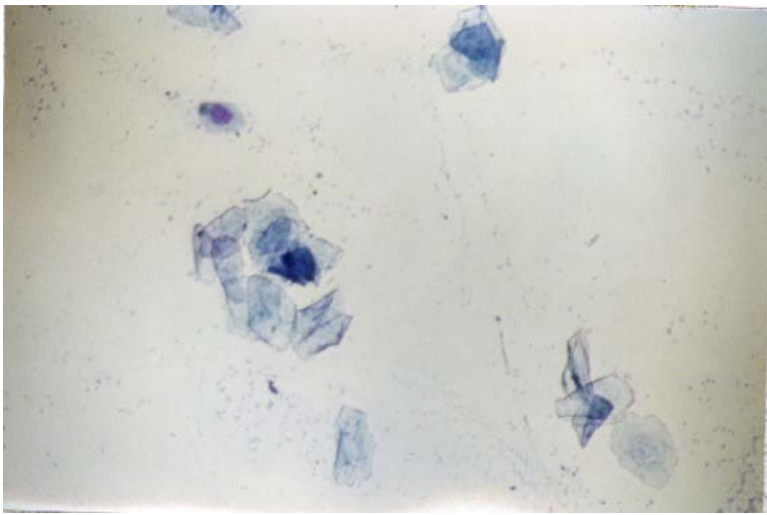
- P**
- rarely mucus
 - Mainly intermediary cells
 - parabasal cells are rare
 - L are rare



- P → E**
- No mucus
 - intermediary and superficial/Keratinized cells
 - No L

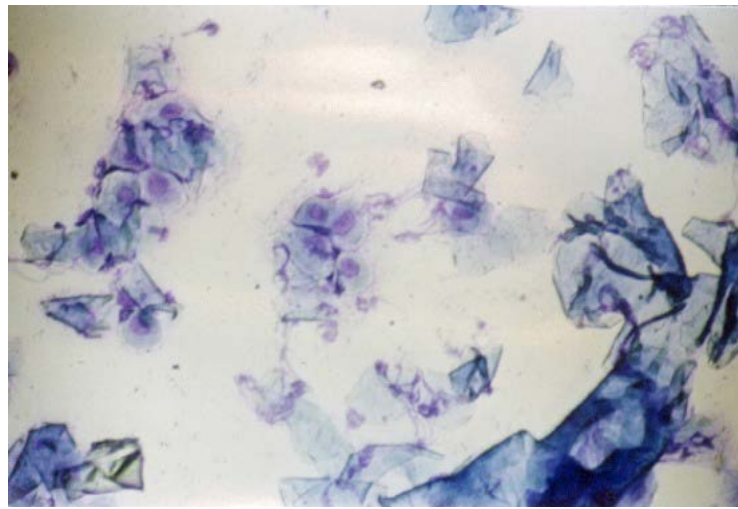


- E**
- Only Keratinized superficial cells
 - Few intermediary cells with nucleus
 - No L



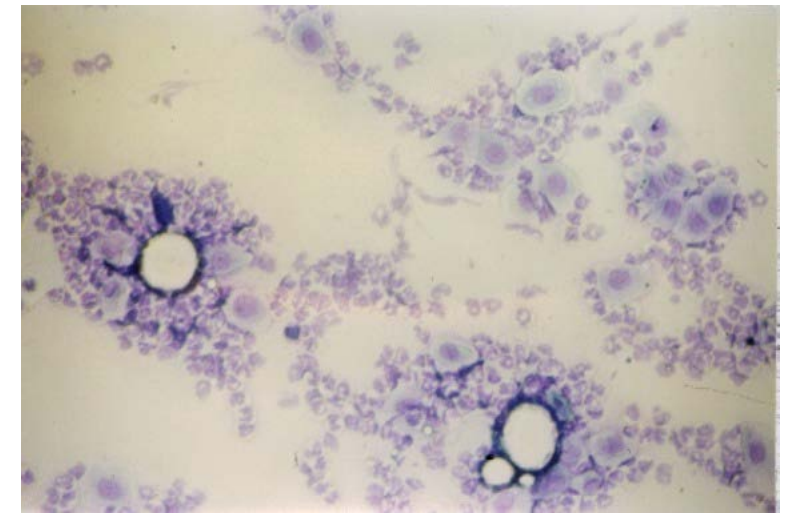
E cont.

- Few intermediary cells with nucleus
- Mainly Keratinized cells
- No L



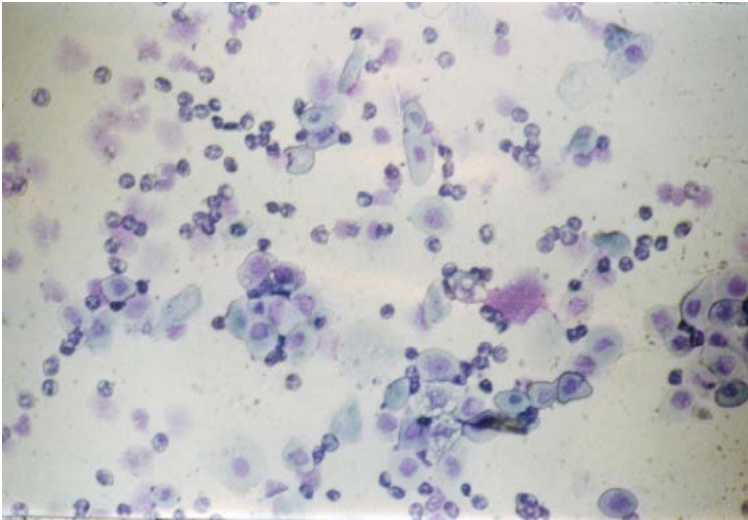
E → M

- Keratinized superficial cells
- Presence of L
- few intermediary cells with nucleus



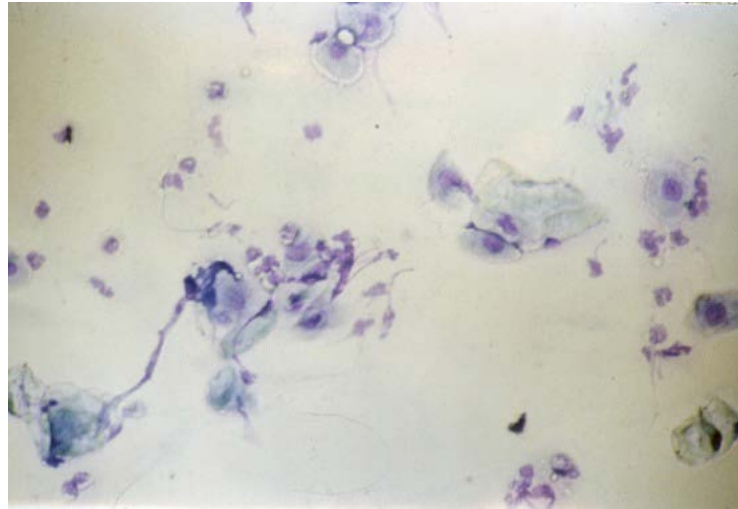
M

- All 3 types of cells (K, EpN, and L):
- Dominated by large number of L
 - Some Cornified cells
 - Some intermediary cells



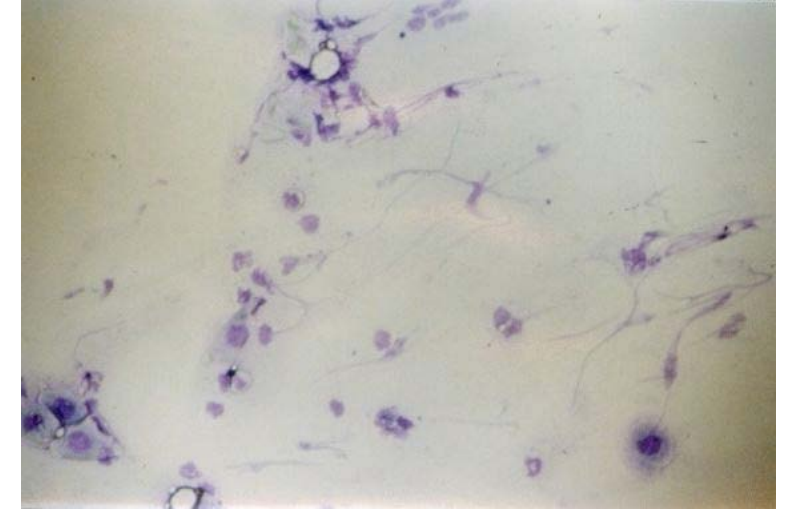
M

- Dominated by presence of L
- Few cornified cells
- Few intermediary cells
- Few parabasal cells and larger int. cells



M → D

- Reduction in cell number
- Reappearance of mucus (thin strands)



M → D

- Reduction in cell number
- Reappearance of mucus (thin strands)