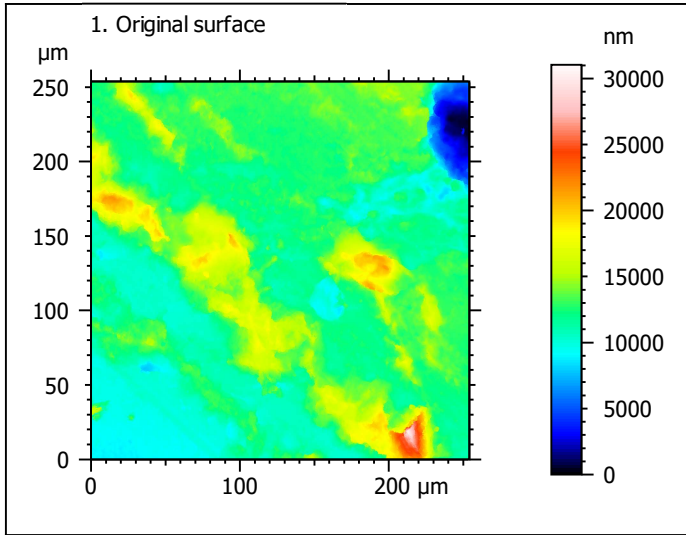


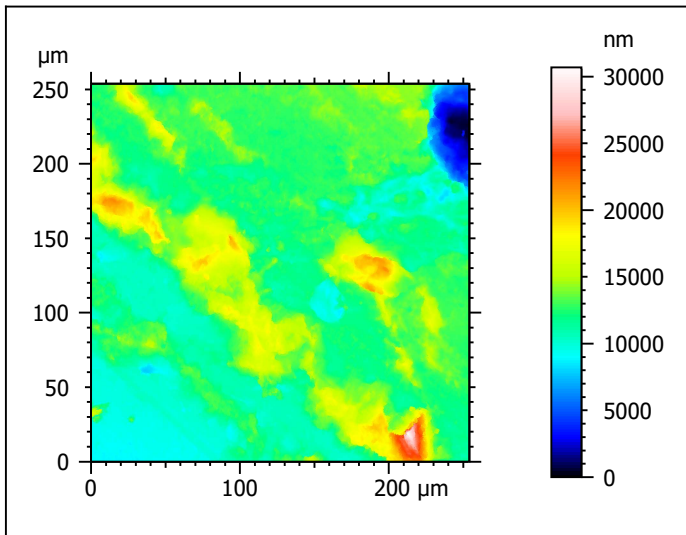
Quantitative use-wear analysis: 'artificial VS natural' experiment
 Template to resample in x and y in order to reach an identical spacing in all with the LSM 800 acquired surfaces (50x/0.95 and 20x/0.70 objectives).

This template is used for eight samples measured five times (before, 50 strokes, 250 strokes, 1000 strokes and 2000 strokes). Each sample was measured three times at non-identical spots. In total, this template is used for 120 surfaces/measurements.

A. Resampling



Identity card			
Name:	FLT4-7_0_A		
Created on:	8/5/2021 10:37:26 AM		
Axis:	X		
Length:	254.0	µm	
Size:	2983	points	
Spacing:	0.08519	µm	
Axis:	Y		
Length:	253.9	µm	
Size:	2982	points	
Spacing:	0.08519	µm	
Axis:	Z		
Layer type:	Topography		
Length:	31040	nm	
NM-points ratio:	0.000 % (0 Pts)		



Identity card			
Name:	FLT4-7_0_A > Resampl...8 points x 1198 points)		
Created on:	8/5/2021 10:37:26 AM		
Axis:	X		
Length:	254.0	µm	
Size:	1198	points	
Spacing:	0.2122	µm	
Axis:	Y		
Length:	253.9	µm	
Size:	1198	points	
Spacing:	0.2121	µm	
Axis:	Z		
Layer type:	Topography		
NM-points ratio:	0.000 % (0 Pts)		