

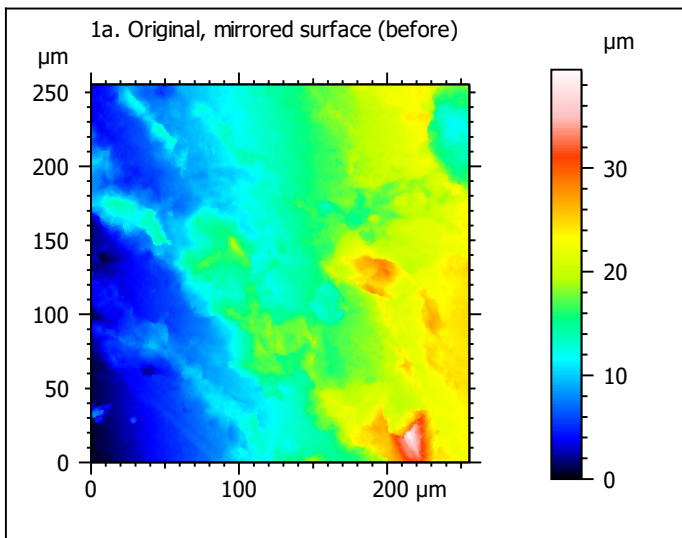
Quantitative use-wear analysis: 'artificial VS natural' experiment

Template to align all surfaces aquired with the LSM with either the 50x/0.95 or the 20x/0.70 objective.

This template is used for fourty samples (8 x each cycle). The measurements taken on moulds instead of original surfaces have been mirrored before. The measurements from after 2000 strokes are alinged based on the measurements from before. In total, this template is used for one hundred twenty surfaces/measurements.

Original surfaces

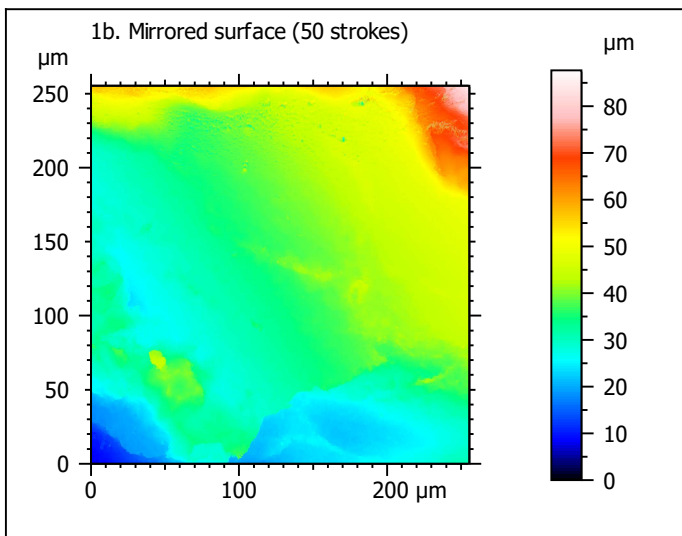
(= before, mirrored)



Studienobjekt-Infos			
Name:	mirroring --- FLT4-7 ...05_zStack_0-A_Topo		
Erstellt am:	05.08.2021 10:37:26		
Achse:	X		
Länge:	255.5	µm	
Größe:	3000	Punkte	
Schrittabstand:	85.19	nm	
Achse:	Y		
Länge:	255.5	µm	
Größe:	3000	Punkte	
Schrittabstand:	85.19	nm	
Achse:	Z		
Schicht-Typ:	Topographie		
NM-Punkte-Verhältnis:	0.000 % (0 Pkte)		

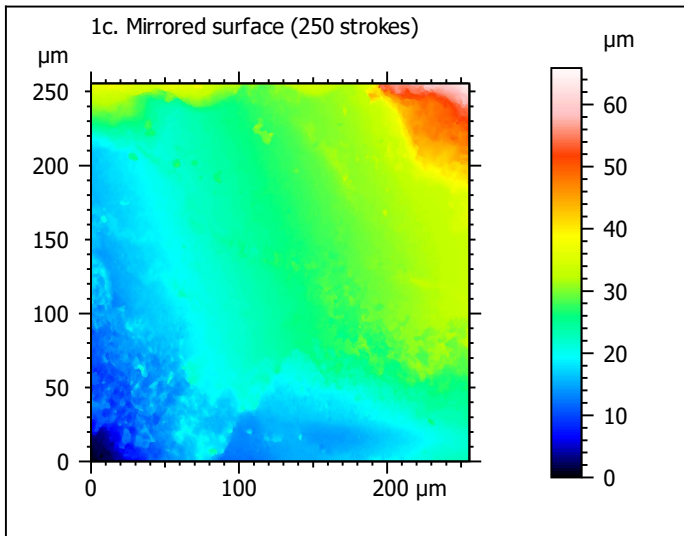
Surface after use

(= 50 strokes, mirrored)



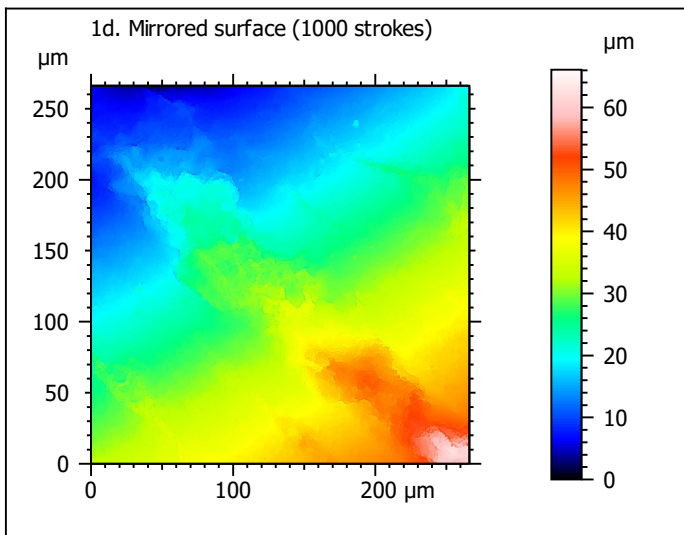
Studienobjekt-Infos			
Name:	mirroring --- FLT4-7 ...5_zStack_50-A_Topo		
Erstellt am:	05.10.2021 12:26:59		
Achse:	X		
Länge:	255.5	µm	
Größe:	3000	Punkte	
Schrittabstand:	85.19	nm	
Achse:	Y		
Länge:	255.5	µm	
Größe:	3000	Punkte	
Schrittabstand:	85.19	nm	
Achse:	Z		
Schicht-Typ:	Topographie		
NM-Punkte-Verhältnis:	0.000 % (0 Pkte)		

Surface after use
(= 250 strokes, mirrored)



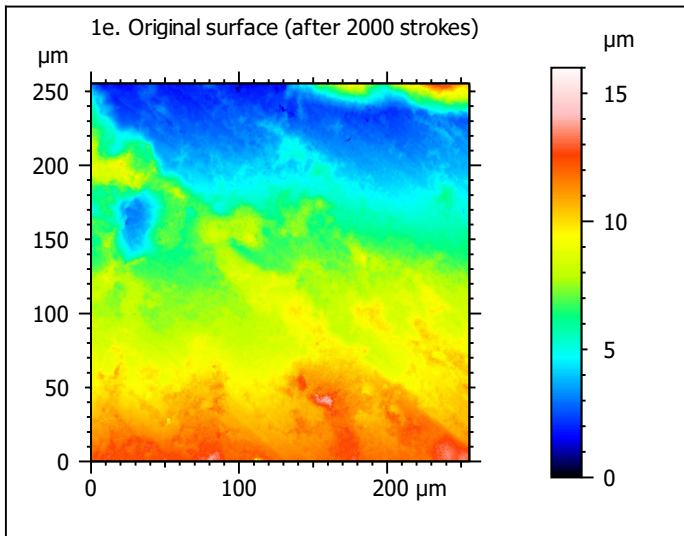
Studienobjekt-Infos			
Name:	mirroring --- FLT4-7 ...zStack_250-A_Topo		
Erstellt am:	08.10.2021 11:34:58		
Achse:	X		
Länge:	255.5	µm	
Größe:	3000	Punkte	
Schrittabstand:	85.19	nm	
Achse:	Y		
Länge:	255.5	µm	
Größe:	3000	Punkte	
Schrittabstand:	85.19	nm	
Achse:	Z		
Schicht-Typ:	Topographie		
NM-Punkte-Verhältnis:	0.000 % (0 Pkte)		

Surface after use
(= 1000 strokes, mirrored)



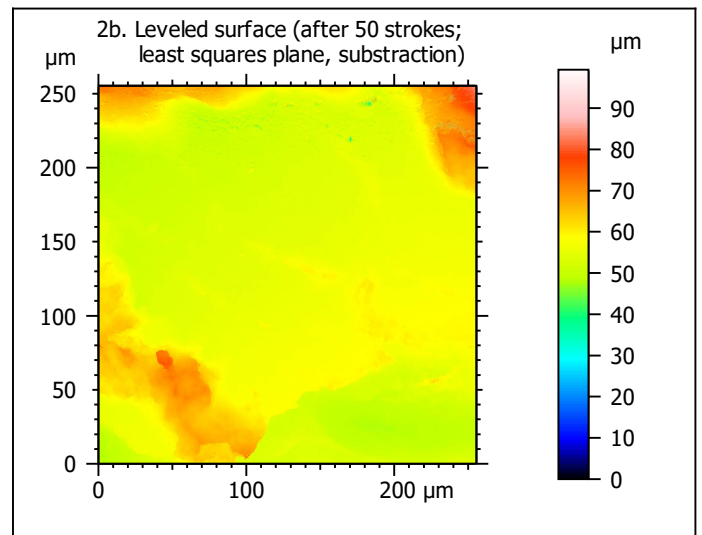
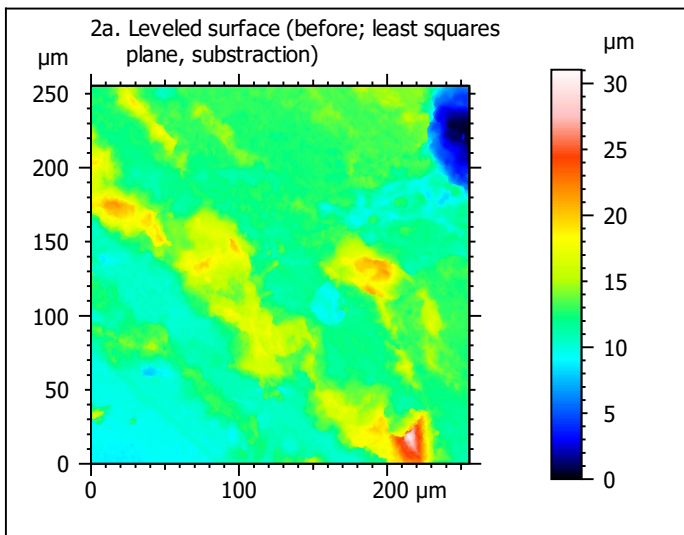
Studienobjekt-Infos			
Name:	mirroring --- FLT4-7 ...zStack_1000-A_Topo		
Erstellt am:	11.10.2021 12:49:58		
Achse:	X		
Länge:	266.1	µm	
Größe:	3125	Punkte	
Schrittabstand:	85.19	nm	
Achse:	Y		
Länge:	266.1	µm	
Größe:	3125	Punkte	
Schrittabstand:	85.19	nm	
Achse:	Z		
Schicht-Typ:	Topographie		
NM-Punkte-Verhältnis:	0.000 % (0 Pkte)		

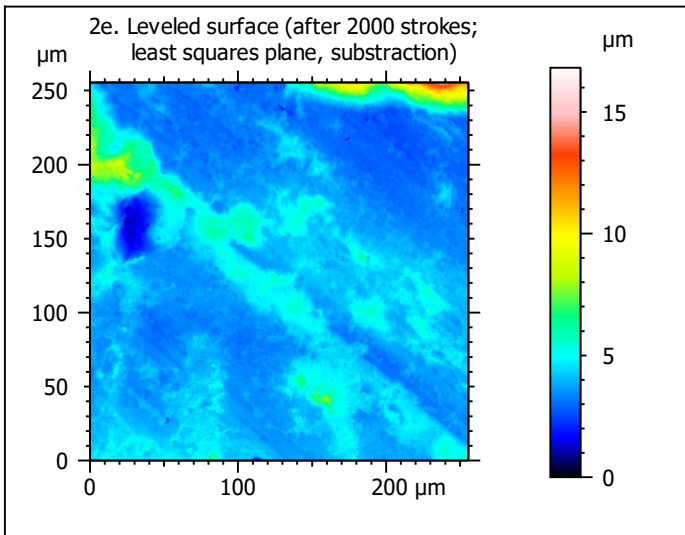
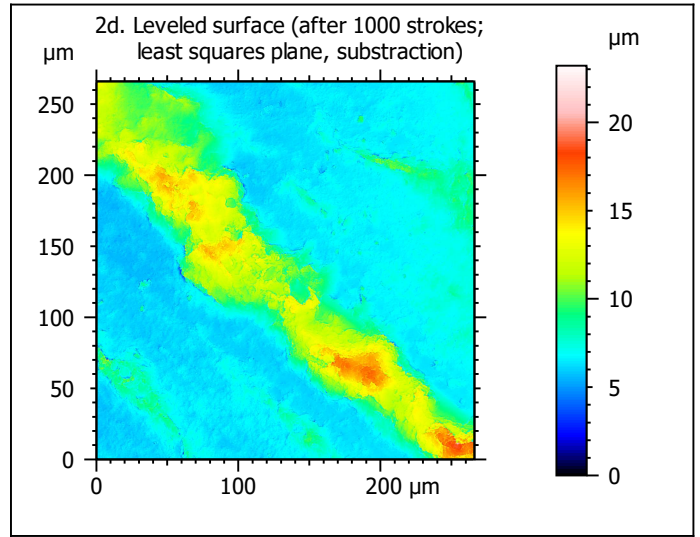
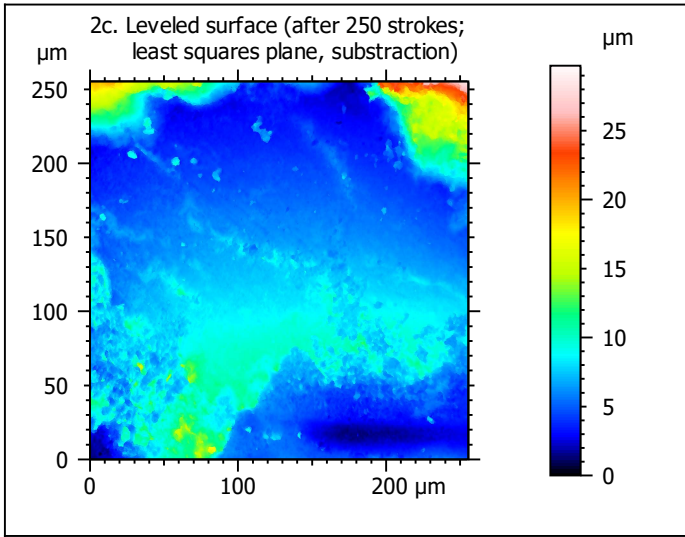
Surface after use
(= after 2000 strokes, original surface)



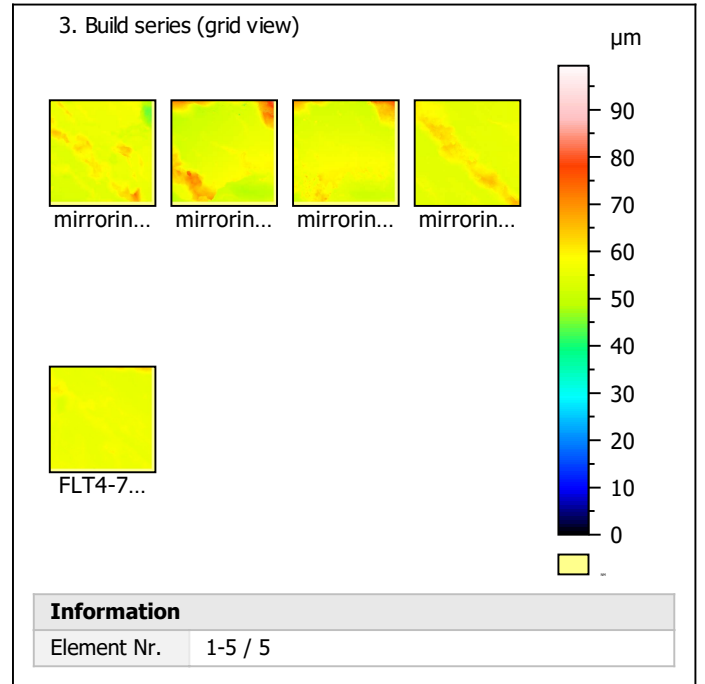
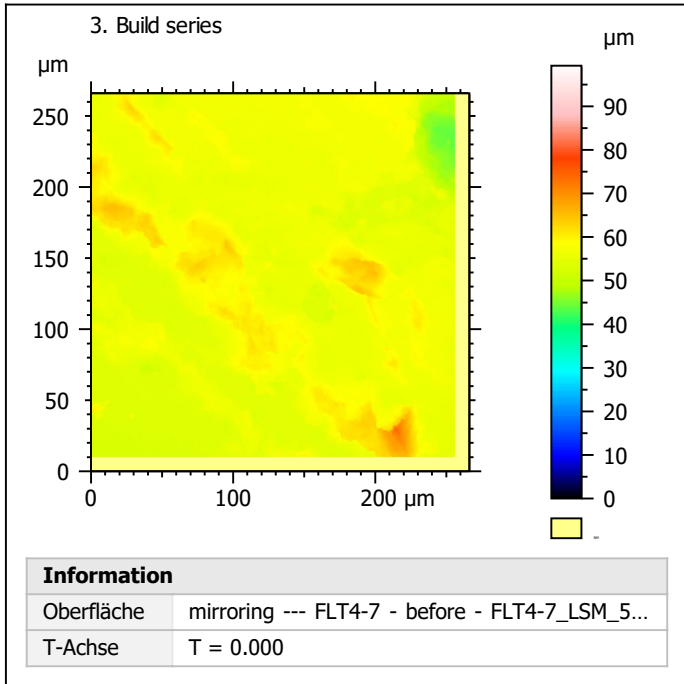
Studienobjekt-Infos			
Name:	FLT4-7_LSM_50x-0....zStack_2000-A_Topo		
Erstellt am:	05.08.2021 08:53:28		
Achse:	X		
Länge:	255.5	µm	
Größe:	3000	Punkte	
Schrittabstand:	85.19	nm	
Achse:	Y		
Länge:	255.5	µm	
Größe:	3000	Punkte	
Schrittabstand:	85.19	nm	
Achse:	Z		
Schicht-Typ:	Topographie		
NM-Punkte-Verhältnis:	0.000 % (0 Pkte)		

A. Levelled surface

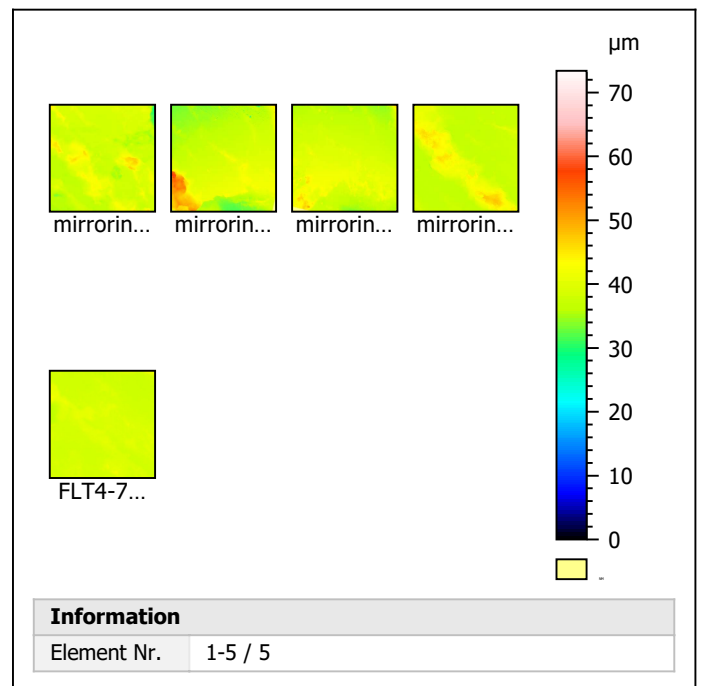
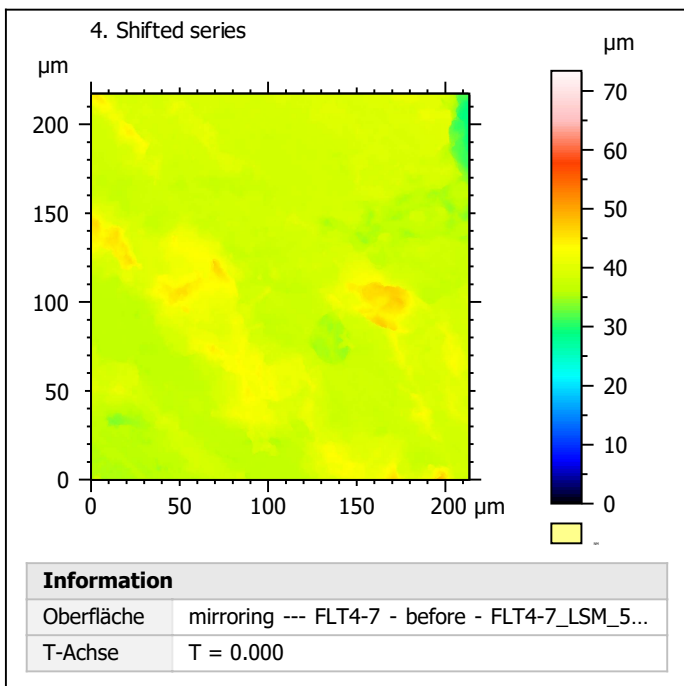




B. Series of surfaces



C. Shifted surfaces



D. Extracted surfaces
 (shifted surfaces)

