

FIGURES

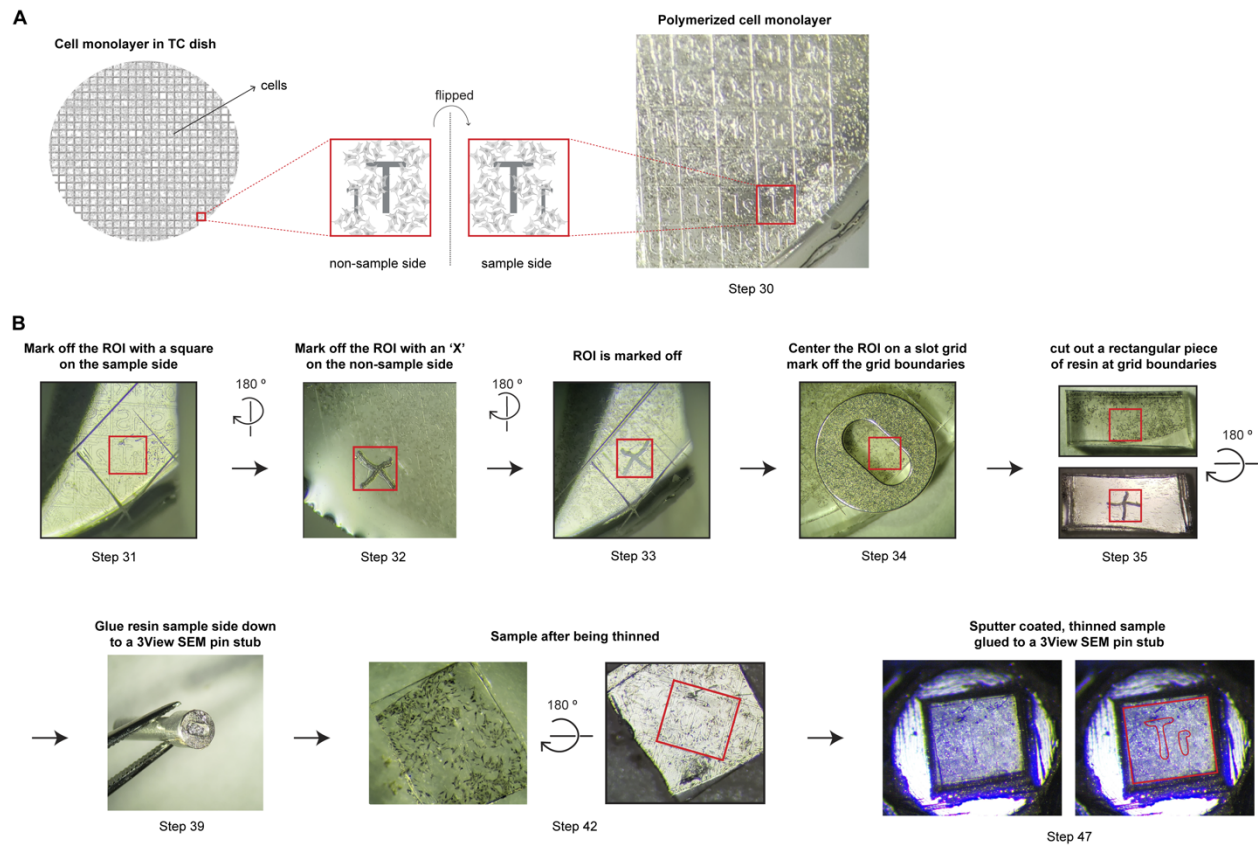


Figure 1: Key steps in trimming and mounting of *en face* embedded samples. (A) Image of an *en face* embedded sample with the ROI highlighted. (B) Pictures highlighting the steps in the workflow for trimming and mounting of the ROI highlighted in (A) onto a 3View pin stub. Steps noted in the figure correspond to steps of the protocol. Created in part with Biorender.com.

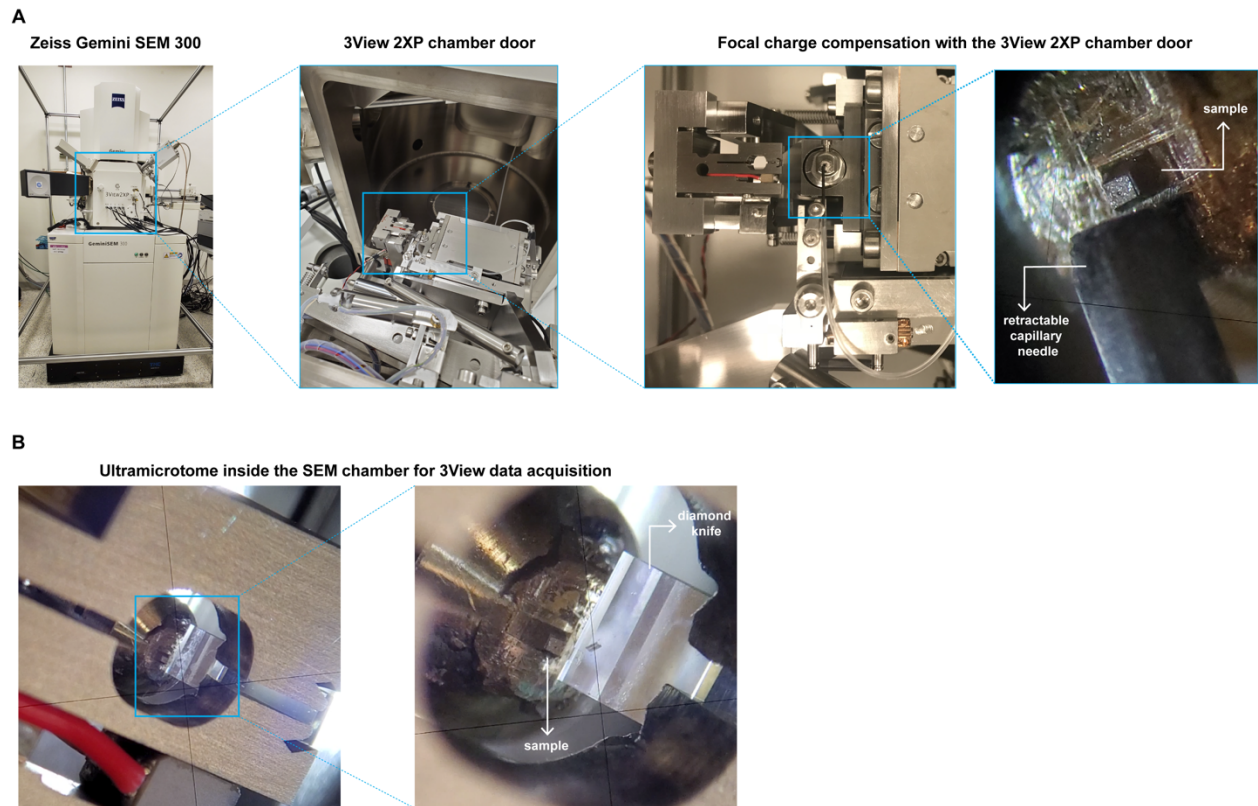


Figure 2: GeminiSEM 300 with a 3View2XP setup. (A) 3View2XP stage setup. Insets show the retractable nozzle for the Focal Charge Compensation system and the sample at higher magnification. (B) Picture of the retractable ultramicrotome system in the 3View2XP stage.