

CG000238 Rev E

USER GUIDE

Visium Spatial Gene Expression Reagent Kits - Tissue Optimization



FOR USE WITH

Visium Spatial Tissue Optimization Slide & Reagent Kit, 4 slides PN-1000193

Visium Gateway Package, 2 rxns PN-1000316

Visium Accessory Kit, PN-1000194

Notices

Document Number

CG000238 • Rev E

Legal Notices

© 2022 10x Genomics, Inc (10x Genomics). All rights reserved. Duplication and/or reproduction of all or any portion of this document without the express written consent of 10x Genomics, is strictly forbidden. Nothing contained herein shall constitute any warranty, express or implied, as to the performance of any products described herein. Any and all warranties applicable to any products are set forth in the applicable terms and conditions of sale accompanying the purchase of such product. 10x Genomics provides no warranty and hereby disclaims any and all warranties as to the use of any third-party products or protocols described herein. The use of products described herein is subject to certain restrictions as set forth in the applicable terms and conditions of sale accompanying the purchase of such product. A non-exhaustive list of 10x Genomics' marks, many of which are registered in the United States and other countries can be viewed at: www.10xgenomics.com/trademarks. 10x Genomics may refer to the products or services offered by other companies by their brand name or company name solely for clarity, and does not claim any rights in those third party marks or names. 10x Genomics products may be covered by one or more of the patents as indicated at: www.10xgenomics.com/patents. The use of products described herein is subject to 10x Genomics Terms and Conditions of Sale, available at www.10xgenomics.com/legal-notices, or such other terms that have been agreed to in writing between 10x Genomics and user. All products and services described herein are intended FOR RESEARCH USE ONLY and NOT FOR USE IN DIAGNOSTIC PROCEDURES.

Licensed Software Updates Warranties

Updates to existing Licensed Software may be required to enable customers to use new or existing products.

Support

Email: support@10xgenomics.com

10x Genomics

6230 Stoneridge Mall Road

Pleasanton, CA 94588 USA

Document Revision Summary

Document Number	CG000238
Title	Visium Spatial Gene Expression Reagent Kits - Tissue Optimization User Guide
Revision	Rev E
Revision Date	February 2022

Specific Changes:

- Added additional recommended pipette tips on page 11.
- Added additional imaging examples on page 38, 39 and 40.

General Changes:

- Updated for general minor consistency of language and terms throughout.

Table of Contents

Introduction	5
Visium Spatial Tissue Optimization Reagent Kits	6
Visium Gateway Tissue Optimization Reagent Kits	7
Visium Accessories	8
Recommended Thermal Cyclers	8
Additional Kits, Reagents & Equipment	10
Protocol Steps & Timing	12
Stepwise Objectives	13
Tips & Best Practices	15
Sample Preparation, Fixation & Staining Guidelines	24
Step 1	27
Permeabilization & cDNA Synthesis	28
1.1 Tissue Permeabilization	30
1.2. Fluorescent cDNA Synthesis	31
Step 2	32
2.1 Tissue Removal & Slide Imaging	34
2.2 Slide Imaging	35
Imaging Guidelines	36
Troubleshooting	41
Appendix	44
Coverslip Application & Removal	45

Introduction

[Visium Spatial Tissue Optimization Reagent Kits](#)

[Visium Accessories](#)

[Recommended Thermal Cyclers](#)

[Imaging System Recommendations](#)

[Additional Kits, Reagents & Equipment](#)

[Protocol Steps & Timing](#)

[Stepwise Objectives](#)

Visium Spatial Tissue Optimization Reagent Kits

Visium Spatial Tissue Optimization Slide & Reagent Kit, 4 slides PN-1000193

Visium Spatial Tissue Optimization Reagent Kit, PN-1000192 (store at -20°C)

Visium Spatial Tissue Optimization Reagent Kit	#	PN
● RT Reagent C	1	2000215
● RT Enzyme D	1	2000216
● Template Switch Oligo	2	3000228
○ Reducing Agent B	1	2000087
● Permeabilization Enzyme	2	2000214

10xGenomics.com

10x
GENOMICS

Visium Spatial Tissue Optimization Slide Kit PN-1000191 (store at ambient temperature)

Visium Spatial Tissue Optimization Slide Kit	#	PN
Visium Spatial Tissue Optimization Slide	4	3000394
Slide Seals	20	3000279
Slide Cassette	4	3000406
Slide Gasket	4	3000426
Tissue Removal Buffer	1	2000221
Tissue Removal Enzyme	1	3000387

10xGenomics.com

10x
GENOMICS

Visium Gateway Tissue Optimization Reagent Kits

Visium Gateway Package*, 2 rxns PN-1000316

*Contains kits and reagents (PN-1000312, PN-1000315, and PN-1000196) not used in this protocol.

Visium Gateway Tissue Optimization Reagent Kit, PN-1000314 (store at -20°C)

Visium Gateway Tissue Optimization Reagent Kit		
	#	PN
<input checked="" type="radio"/> RT Reagent C	1	2000377
<input checked="" type="radio"/> RT Enzyme D	1	2000294
<input checked="" type="radio"/> Template Switch Oligo	1	3000228
<input type="radio"/> Reducing Agent B	1	2000087
<input checked="" type="radio"/> Permeabilization Enzyme	1	2000214

10xGenomics.com

10x
GENOMICS

Visium Gateway Tissue Optimization Slide Kit PN-1000313 (store at ambient temperature)

Visium Gateway Tissue Optimization Slide Kit		
	#	PN
Visium Spatial Tissue Optimization Slide	1	3000394
Slide Seals	5	3000279
Slide Cassette	1	3000406
Slide Gasket	1	3000426
Tissue Removal Buffer	1	2000378
Tissue Removal Enzyme	1	3000387

10xGenomics.com

10x
GENOMICS

Visium Accessories

Product	Part Number (Kit)	Part Number (Item)
Thermocycler Adaptor		3000380
Visium Imaging Test Slide	1000194	2000235
Slide Alignment Tool		3000433

Recommended Thermal Cyclers

Supplier	Description	Part Number
Bio-Rad	C1000 Touch Thermal Cycler with 96-Deep Well Reaction Module	1851197
Eppendorf	MasterCycler Pro (discontinued)	North America 950030010 International 6321 000.019
Thermo Fisher Scientific	Veriti 96-Well Thermal Cycler (discontinued)	4375786

Imaging System Recommendations

The imaging systems listed below were used by 10x Genomics. Any equivalent system with the listed features may be used for imaging. Hardware compatibility may be tested by using the Visium Imaging Test Slide. Consult the Visium Spatial Gene Expression Imaging Guidelines Technical Note (CG000241) for more information.

Imaging Systems & Specifications	
Microscopes (Any equivalent system with the listed features may be used for imaging)	
Nikon	Nikon Eclipse Ti2 with brightfield and fluorescence capacity (TRITC)
Molecular Devices	ImageXpress Nano Automated Slide Imaging System
Hamamatsu	NanoZoomer S60
Keyence	Keyence BZX800
BioTek	Cytation 7
Thermo Fisher Scientific	EVOS M7000
Leica	Leica DMI8 Versa 8
Microscope Features	
Objectives	<ul style="list-style-type: none"> • 4X (Plan APO λ; NA 0.20) • 10X (Plan APO λ; NA 0.45) • 20X (Plan APO λ; NA 0.75)
Automated Scanning Stage	Microscope tile scanning functionality is required for imaging tissue sections placed on a Capture Area of a Visium Spatial slide.
Brightfield Features (for H&E staining only)	<ul style="list-style-type: none"> • Color camera (3 x 8 bit, 2,424 x 2,424 pixel resolution) • White balancing functionality • Minimum Capture Resolution 2.18 $\mu\text{m}/\text{pixel}$ • Exposure times 2-10 milli sec
Fluorescence Features*	<ul style="list-style-type: none"> • Light source (or equivalent) with a wavelength range of 380-680 nm • Monochrome camera (14 bit, 2,424 x 2,424 pixel resolution) • DAPI filter cube (Excitation 392/23, Emission 447/60) • Cy5 filter cube (Excitation 618/50, Emission 698/70) • TRITC filter cube (Excitation 542/20, Emission 620/52) (required for Immunofluorescence Staining & Tissue Optimization protocols only) • Minimum Capture Resolution 2.18 $\mu\text{m}/\text{pixel}$ • Exposure times 100 milli sec-2 sec
* Only required for Visium Spatial Tissue Optimization protocol & Visium Imaging Test Slide verification and if performing Immunofluorescence Staining prior to Tissue Optimization and Gene Expression protocols.	
Additional Specifications	
Image Format	Save image as a tiff (preferred) or jpeg
Computer	Computer with sufficient power to handle large images (0.5-5 GB)
Software	Image stitching software (microscope's software or equivalent, like Image J)

Additional Kits, Reagents & Equipment

The items in the table below have been validated by 10x Genomics and are highly recommended for Visium Spatial Reagent Kits protocols. **Substituting materials may adversely affect system performance.** This list does not include standard laboratory equipment, such as water baths, centrifuges, pH meters, vortex mixers, freezers, etc.

Supplier	Description	Part Number (US)
Plastics		
Eppendorf	DNA LoBind Tubes, 1.5 ml	022431021
Corning	Self-Standing Polypropylene Centrifuge Tubes, 50 ml, sterile	430921
VWR	Divided Polystyrene Reservoirs	41428-958
Thermo Fisher Scientific	Simport Scientific LockMailer Tamper Evidence Slide Mailer (alternatively, use a 50-ml centrifuge tube)	22-038-399
Kits & Reagents		
Thermo Fisher Scientific	Nuclease-free Water	AM9937
	Low TE Buffer (10 mM Tris-HCl pH 8.0, 0.1 mM EDTA)	12090-015
	Universal Mouse Reference RNA (Optional. Alternatively, use any bulk Total RNA. 1µg/µl, RIN ≥ 7)	QS0640
	Shandon ColorFrost Plus Slides (Alternatively, use any 75 x 25 x 1 mm slide)	6776214
	Fisherbrand Superfrost Plus Microscope Slides (Optional - Alternatively, use any 75 x 25 x 1 mm slide)	12-550-15
Millipore Sigma	SSC Buffer 20X Concentrate	S66391L
	Sodium dodecyl sulfate (SDS) solution, 10% in water	71736
Fisher Chemical	Hydrochloric Acid Solution, 0.1N	SA54-1
-	Ultrapure/Milli-Q water (from Milli-Q Integral Ultrapure Water System or equivalent)	
Equipment		
Labnet	Slide Spinner (alternatively, use a 50-ml centrifuge tube in a centrifuge with a swing-bucket rotor)	C1303-T


Recommended Pipette Tips

10x Genomics recommends using only validated emulsion-safe pipette tips for all Single Cell protocols. Rainin pipette tips have been extensively validated by 10x Genomics and are highly recommended for all single cell assays. If Rainin tips are unavailable, any of the listed alternate pipette tips validated by 10x Genomics may be used.

Supplier	Description	Part Number (US)
Recommended Pipettes & Pipette tips		
Rainin	Pipettes	
	Pipet-Lite Multi Pipette L8-50XLS+	17013804
	Pipet-Lite Multi Pipette L8-200XLS+	17013805
	Pipet-Lite Multi Pipette L8-10XLS+	17013802
	Pipet-Lite Multi Pipette L8-20XLS+	17013803
	Pipet-Lite LTS Pipette L-2XLS+	17014393
	Pipet-Lite LTS Pipette L-10XLS+	17014388
	Pipet-Lite LTS Pipette L-20XLS+	17014392
	Pipet-Lite LTS Pipette L-100XLS+	17014384
	Pipet-Lite LTS Pipette L-200XLS+	17014391
	Pipet-Lite LTS Pipette L-1000XLS+	17014382
	Pipette Tips	
	Tips LTS 200UL Filter RT-L200FLR	30389240
	Tips LTS 1ML Filter RT-L1000FLR	30389213
Tips LTS 20UL Filter RT-L10FLR	30389226	
Alternate Recommendations <i>(If Rainin pipette tips are unavailable, any of the listed pipette tips may be used)</i>		
Eppendorf	Pipettes	
	Eppendorf Research plus, 8-channel, epT.I.P.S. Box, 0.5 – 10 µL	3125000010
	Eppendorf Research plus, 8-channel, epT.I.P.S. Box, 10 – 100 µL	3125000036
	Eppendorf Research plus, 8-channel, epT.I.P.S. Box, 30 – 300 µL	3125000052
	Eppendorf Research plus, 1-channel, epT.I.P.S.® Box, 0.1 – 2.5 µL	3123000012
	Eppendorf Research plus, 1-channel, epT.I.P.S.® Box, 0.5 – 10 µL	3123000020
	Eppendorf Research plus, 1-channel, epT.I.P.S.® Box, 2 – 20 µL	3123000039
	Eppendorf Research plus, 1-channel, epT.I.P.S.® Box, 2 – 200 µL	3123000055
	Eppendorf Research plus, 1-channel, epT.I.P.S.® Box, 100 – 1000 µL	3123000063
	Pipette Tips (compatible with Eppendorf pipettes only)	
ep Dualfilter T.I.P.S., 2-20 µL	0030078535	
ep Dualfilter T.I.P.S., 2-200 µL	0030078551	
ep Dualfilter T.I.P.S., 2-1,000 µL	0030078578	
Labcon*	ZAP SLIK 20 µL Low Retention Aerosol Filter Pipet Tips for Rainin LTS	4-1143-965-008
	ZAP SLIK 200 µL Low Retention Aerosol Filter Pipet Tips for Rainin LTS	4-1144-965-008
	ZAP SLIK 1200 µL Low Retention Aerosol Filter Pipet Tips for Rainin LTS	4-1145-965-008
Biotix*	xTIP4 Racked Pipette Tips, Rainin LTS Pipette Compatible, 0.1-20uL	63300931
	xTIP4 Racked Pipette Tips, Rainin LTS Pipette Compatible, 200uL	63300001
	xTIP4 Racked Pipette Tips, Rainin LTS Pipette Compatible, 1200uL	63300004

*Compatible with Rainin pipettes

Protocol Steps & Timing



Steps		Timing
Step 1 – Permeabilization & cDNA Synthesis		
1.1	Tissue Permeabilization	45 min
1.2	Fluorescent cDNA Synthesis	60 min
Step 2 – Tissue Removal		
2.1	Tissue Removal	70 min
2.2	Slide Imaging*	Variable

*~3 h workflow, excluding imaging steps

Stepwise Objectives



The Visium Spatial Gene Expression Solution measures total mRNA in intact tissue sections and maps where that gene activity is occurring. Prior to library preparation, the Visium Spatial Tissue Optimization workflow allows the user to optimize permeabilization conditions for a tissue of interest. Tissue sections are placed onto corresponding Capture Areas on the Visium Spatial Tissue Optimization Slide. These sections are fixed and stained, as described in Tissue Fixation & Staining Demonstrated Protocols – CG000160 or CG000312, and then permeabilized for different times. mRNA released during permeabilization binds to capture probes on the slide. cDNA is generated using fluorescently labeled nucleotides to visualize synthesized cDNA. Finally, the tissue is enzymatically removed, leaving fluorescently labeled cDNA that may be visualized using fluorescence microscopy to select the optimal permeabilization time.

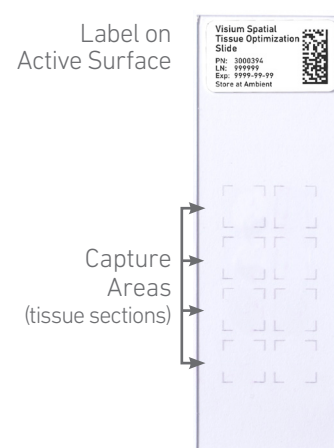
At the successful completion of this protocol, users should proceed to the Visium Gene Spatial Gene Expression Protocol using the Visium Spatial Gene Expression Reagent Kits User Guide (CG000239).

Visium Spatial Tissue Optimization Slide

Each Capture Area on the Visium Spatial Tissue Optimization Slide is defined by an etched frame. Each Capture Area contains oligonucleotides for mRNA capture. Each probe has poly(dT) primers that enables the production of cDNA from poly-adenylated mRNA. These probes do not contain a spatial barcode.

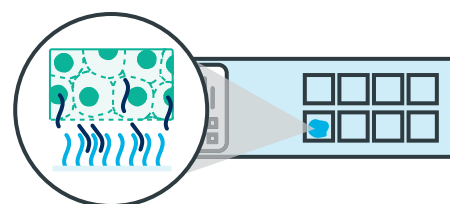
There are eight Capture Areas per slide. Seven of these are used for tissue and one is used for a positive RNA control. Only one tissue type should be tested per slide. Use serial sections from a single tissue block.

Visium Spatial Tissue Optimization Slide



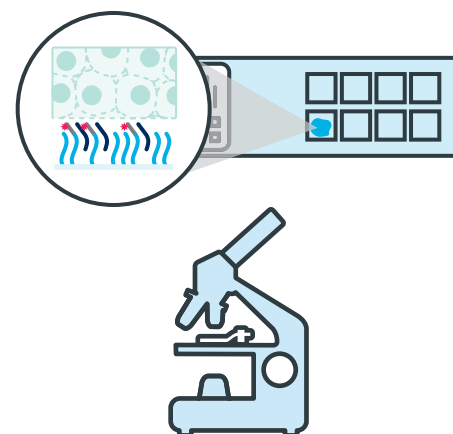
Step 1 Permeabilization & Fluorescent cDNA Synthesis

Fixed and stained tissue sections are permeabilized for different times. Each Capture Area captures poly-adenylated mRNA from the attached tissue section. A Master Mix containing reverse transcription (RT) reagents and fluorescently labeled nucleotides is added on top of the tissue sections, resulting in fluorescently labeled cDNA.



Step 2 Tissue Removal

Tissue is enzymatically removed, leaving behind fluorescent cDNA covalently linked to oligonucleotides on the Visium Spatial Tissue Optimization slide. Fluorescent cDNA is visualized under fluorescence imaging conditions verified using the Visium Imaging Test Slide. H&E and fluorescence images are compared. The permeabilization time that results in maximum fluorescence signal with the lowest signal diffusion is optimal. If the signal is the same at two time points, the longer permeabilization time is considered optimal.



Tips & Best Practices



Icons



Tips & Best Practices section includes additional guidance



Signifies critical step requiring accurate execution



Troubleshooting section includes additional guidance

General Reagent Handling

- Fully thaw and thoroughly mix reagents before use.
- Keep RT Master Mix on ice during setup and use. Promptly move reagents back to the recommended storage.
- Use a pH meter to adjust pH as necessary during buffer preparation.

Pipette Calibration

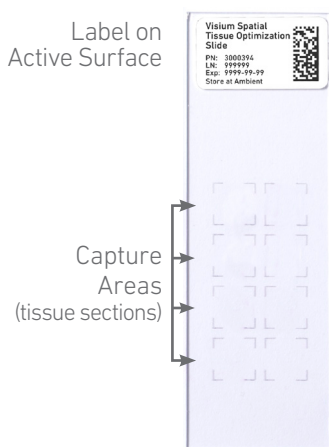
- Follow manufacturer’s calibration and maintenance schedules.

Visium Spatial Tissue Optimization Slide

- Includes 8 Capture Areas (8 x 8 mm), covered with oligonucleotides for mRNA capture.
- The active surface of the slide is defined by a readable label.
- The tissue sections are always placed on the Capture Areas on the active surface. For more information, consult the Visium Spatial Protocols – Tissue Preparation Guide (Demonstrated Protocol CG000240).

Visium Spatial Tissue Optimization Slide

Label on Active Surface



Slide Storage

- Always store unused slides in a dry environment at room temperature in their original packaging and keep sealed. **DO NOT** remove desiccant.
- After tissue placement, store slides in a sealed container. If using an unsealed slide mailer, store in a secondary sealed container, such as a resealable bag.
- Store the sealed container containing slides with tissue at **-80°C** for up to four weeks.

Store Unsealed Slide Mailers in a Secondary Sealed Container



Slides in image are representative.

Slide Handling

- Always wear gloves when handling slides.
- Exercise caution when handling slide edges to prevent injury.
- Ensure that the active surface of a slide faces up and is never touched. The orientation of the label on the slide defines the active surface.
- The tissue sections should always be on the active surface of the slide. **DO NOT** touch the tissue sections on the slide.
- Minimize exposure of the slides to sources of particles and fibers.
- When immersing slides in water, ensure that the tissue sections are completely submerged.
- Keep the slide flat on the bench when adding reagents to the active surface.
- Ensure that no absorbent surface is in contact with the reagents on the slide during incubation.

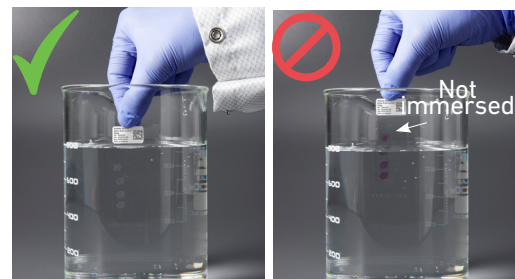
Active Surface with Tissue Sections



Immersing Slide

Correct

Incorrect



Reagent on Slide

Correct

Incorrect

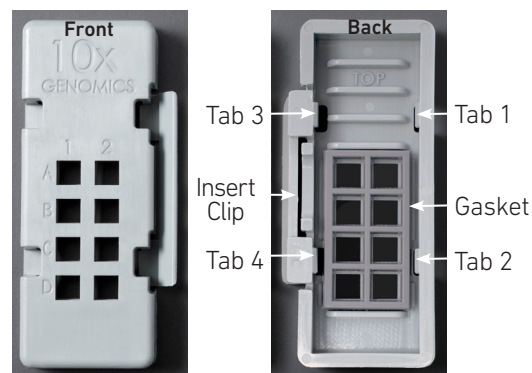


Slides in image are representative.

Slide Cassette

- The Slide Cassette encases the slide and creates leakproof wells for adding reagents.
- Place the slides in the Slide Cassette only when specified.
- The Slide Cassette includes a removable gasket.
- An Insert Clip and four tabs at the back of the Slide Cassette are used for holding the slide in the cassette, as shown.
- The removable gasket corresponds to the Capture Areas on the slides.
- The Slide Cassette may be assembled using the Slide Alignment Tool or manually. Instructions for both are provided in the following section.
- See Slide Cassette Assembly & Removal instructions for details.
- Ensure that the back of the Slide Cassette is facing the user prior to assembly. The active surface of the slide with tissue sections will face down such that the slide label is no longer readable.
- Practice assembly with a plain glass slide (75 x 25 x 1 mm).
- Applying excessive force to the slide may cause the slide to break.

Slide Cassette



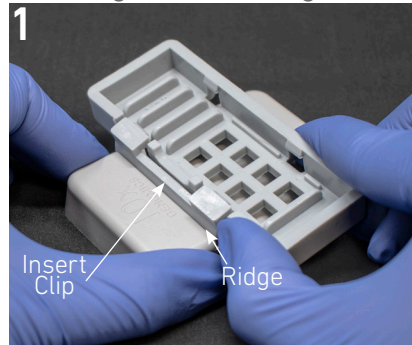
Slide Alignment Tool



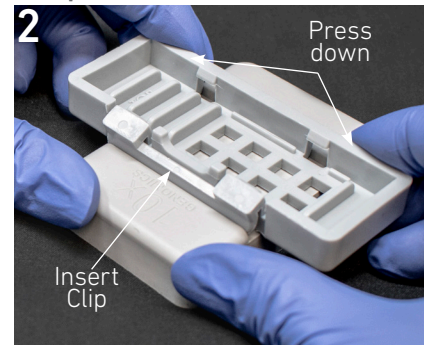
Slide Cassette Assembly

! Exercise caution when handling slide edges to prevent injury.

Position Slide Cassette along alignment tool ridges



Push Insert Clip along the ridge & press Slide Cassette down



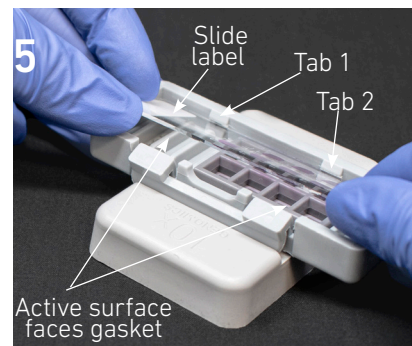
Slide Cassette secured on alignment tool



Position Gasket to align with Slide Cassette cutouts



Insert long edge of slide under tabs 1 & 2; ensure slide is flush



Press slide down until it is flush with the gasket and under tabs 3 & 4



! Slide insertion may push gasket out of alignment with slide cutouts. Adjust if necessary.

Remove Slide Cassette while pressing slide against the gasket



Slide Cassette
Removal

1 Position Slide Cassette along alignment tool ridges



2 Push Insert Clip along the ridge & press down



3 Slide Cassette sits securely on alignment tool



4 Lift slide at Slide Cassette groove



Manual Slide Cassette Assembly & Removal

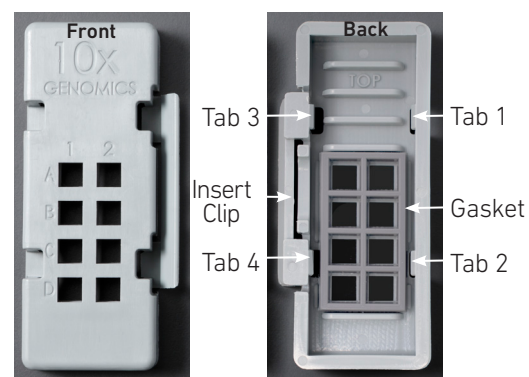
Assembly

- i. Remove the gasket from the Slide Cassette and re-insert the gasket, ensuring that the gasket and Slide Cassette cutouts are aligned.
- ii. Align the label on top of the slide to the top of the Slide Cassette, as shown.
- iii. Insert the slide under tabs 1 and 2. Ensure that the long edge of the slide is flush with the side of the Slide Cassette.
- iv. Press the insert clip **very firmly** by applying even force on the lower part of the insert clip.
- v. Place a finger in between tab 3 and the top of the cassette, and one finger between tab 4 and the bottom of the cassette. Press down on the slide evenly until the slide is under each tab and release the insert clip.

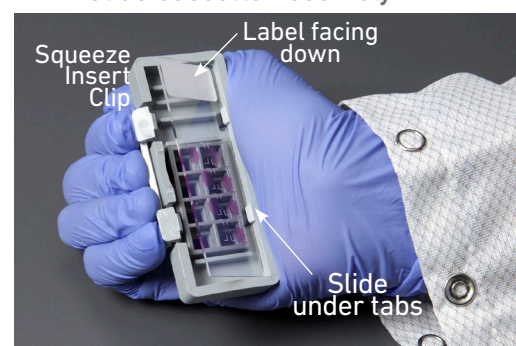
Removal

- i. Press the insert clip **very firmly** to release the slide from the cassette.
- ii. Lift slide at Slide Cassette groove between tabs 3 and 4 until the slide can be removed.

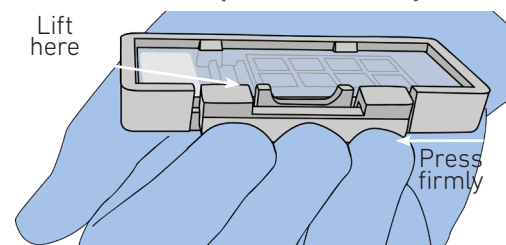
Slide Cassette



Slide Cassette Assembly



Insert Clip - Press Firmly



Reagent Addition & Removal from Wells



- Place the assembled slide in the slide cassette flat on the bench.
- Dispense and remove reagents along the side of the wells without touching the tissue sections and without introducing bubbles.
- Always cover the tissue section completely when adding reagents to the well. A gentle tap may help spread the reagent more evenly.
- Ensure that no bubbles are introduced in the process.

Reagent Addition/Removal



Slide Seal Application & Removal

Application

- Place the Slide Cassette flat on the bench.
- Remove the back of the adhesive Slide Seal.
- Align the Slide Seal with the surface of the Slide Cassette and apply while firmly holding the Slide Cassette.
- Press on the Slide Seal to ensure uniform adhesion.

Removal

- Place the Slide Cassette flat on the bench.
- Pull on the Slide Seal from the edge while firmly holding the Slide Cassette. Ensure that no liquid splashes out of the wells.

Slide Seal Application



Slide Incubation Guidance

Incubation at a specified temperature

- Position a Thermocycler Adaptor on a thermal cycler that is set at the incubation temperature.
- Ensure that the Thermocycler Adaptor is in contact with the thermal cycler surface uniformly.
- When incubating a slide, position the slide on the Thermocycler Adaptor with the active surface facing up.



- Ensure that the entire bottom surface of the slide is in contact with Thermocycler Adaptor.
- When incubating a slide encased in a Slide Cassette, place the assembled unit on the Thermocycler Adaptor with the wells facing up. The Slide Cassette should always be sealed when on the Thermocycler Adaptor.

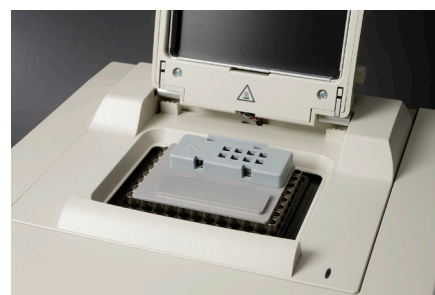
Place Thermocycler Adaptor



Incubate Slide



Incubate Assembled Slide Cassette



Incubation at room temperature

- Place the slide/Slide Cassette on a flat, clean, non-absorbent work surface.
- Ensure that no absorbent surface is in contact with the reagents on the slide during incubation.

Slide Incubation

Correct



Incorrect



Slides in image are representative.

Sample Preparation, Fixation & Staining Guidelines

Sample Preparation Guidelines

Proper tissue handling and preparation techniques are critical in preserving the morphological quality of the tissue sections and subsequent transcript availability in Visium Spatial protocols.

Listed below are some key considerations for preparing samples that are compatible with the Visium Spatial protocols.



Consult the Visium Spatial Protocols – Tissue Preparation Guide for complete information (Demonstrated Protocol CG000240).

Key Considerations

Slide Handling (before sectioning)

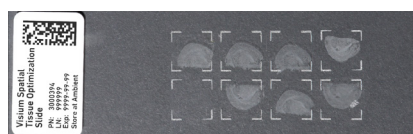
- Equilibrate Visium slides to cryostat temperature before cryosectioning.
- Store unused slides in original packaging and keep sealed. **DO NOT** remove desiccant. If necessary, store original packaging in a secondary container such as a resealable bag.

Freezing and Embedding

- Snap freeze samples in a bath of isopentane and liquid nitrogen.
- Store frozen samples at **-80°C** in a sealed container for **long-term** storage prior to embedding.

Cryosectioning

- Equilibrate OCT tissue block to the cryostat chamber temperature for **30 min**.
- Place tissue sections on the Capture Area within the etched frame on the slide. Ensure that serial tissue sections from the same block are placed on the Tissue Optimization slide.
- Leave one Capture Area empty for the positive control.



Slide Handling (after sectioning)

- Maintain slides containing sections in a low moisture environment.
- Keep slides cold and transport slides on dry ice.
- DO NOT** leave slides at room temperature.

Sample Storage

- Store slides individually in a sealed container at **-80°C** for up to **4 weeks** to avoid multiple freeze thaw cycles. If necessary, place the sealed container in a secondary container, such as a resealable bag.

Fixation & Staining Guidelines

Proper tissue fixation and staining should be performed before executing the Permeabilization & cDNA Synthesis steps.



Consult Demonstrated Protocols (available on the 10x Genomics Support website) for fixing and staining tissue sections:

Methanol Fixation, H&E Staining & Imaging for Visium Spatial Protocols (Demonstrated Protocol CG000160)

OR

Methanol Fixation, Immunofluorescence Staining & Imaging for Visium Spatial Protocols (Demonstrated Protocol CG000312)

DO NOT proceed with Permeabilization & cDNA Synthesis without performing appropriate fixation, staining, and imaging (if needed) protocol steps for the tissue sections on the appropriate Visium slide.

Step 1

Permeabilization & cDNA Synthesis

- 1.1 Tissue Permeabilization
- 1.2 Fluorescent cDNA Synthesis


1

1.0 Permeabilization & cDNA Synthesis

CHECKLIST – GET STARTED!

Items	10x PN	Preparation & Handling	Storage
-------	--------	------------------------	---------

Prepare & Equilibrate to 37°C

<input type="checkbox"/> ● Permeabilization Enzyme	2000214	 Centrifuge briefly and resuspend in 1.2 ml HCl (0.1N), pipette mix, centrifuge briefly, verify no precipitate. Equilibrate to 37°C for 15 min prior to step 1.1c. DO NOT exceed 20 min. Permeabilization enzyme will be kept at 37°C throughout step 1.1e.	-20°C
--	---------	--	-------



Store unused resuspended enzyme at -20°C **immediately** after Tissue Permeabilization. DO NOT freeze-thaw more than 3x. DO NOT keep at 37°C for extended periods.

Equilibrate to room temperature



<input type="checkbox"/> ● RT Reagent C Minimize light exposure	2000215/ 2000377	Thaw, vortex, centrifuge briefly.	-20°C
--	---------------------	-----------------------------------	-------

<input type="checkbox"/> ● Template Switch Oligo	3000228	Centrifuge briefly, resuspend in 80 µl Low TE Buffer. Vortex 15 sec at maximum speed, centrifuge briefly, leave at room temperature for ≥ 30 min. After resuspension, store at -80°C.	-20°C
--	---------	---	-------

<input type="checkbox"/> ○ Reducing Agent B	2000087	Thaw, vortex, verify no precipitate, centrifuge briefly.	-20°C
---	---------	--	-------

Place on ice


<input type="checkbox"/> ● RT Enzyme D	2000216/ 2000294	Pipette mix, centrifuge briefly.	-20°C
--	---------------------	----------------------------------	-------

Obtain

<input type="checkbox"/> Nuclease-free water	-	-	Ambient
<input type="checkbox"/> 20X SSC	-	-	Ambient
<input type="checkbox"/> Slide Cassette	3000406	See Tips & Best Practices.	Ambient
<input type="checkbox"/> Slide Seals	3000279	See Tip & Best Practices.	Ambient
<input type="checkbox"/> Low TE Buffer	-	-	-
<input type="checkbox"/> Hydrochloric Acid Solution (HCl), 0.1N	-	-	-
<input type="checkbox"/> Reference RNA	-	Human or mouse RNA at 1 µg/µl, RIN ≥ 7	-80°C

Prepare

	0.1X SSC <i>Store at room temperature</i>	Stock	Final	50 ml (1 slide)
<input type="checkbox"/> 0.1X SSC (can be prepared ahead of time)	SSC	20X	0.1X	250 µl
	Water (Ultrapure/ Milli-Q)	-	-	49.75 ml

 DO NOT proceed with Permeabilization & cDNA Synthesis without performing appropriate fixation, staining, and imaging (if applicable) for the tissue sections on the Visium slide.

Step Overview (Step 1.1)

Permeabilization Time Course

Fixed and stained tissue sections on the Visium Spatial Tissue Optimization Slide are incubated with the Permeabilization Enzyme for different lengths of time. This process identifies an optimal tissue permeabilization time for use in the Visium Spatial Gene Expression workflow. Optimal permeabilization ensures sufficient mRNA release and minimizes mRNA diffusion during library preparation.

A suggested time course is shown on the right. However, these times may be adjusted depending on the tissue type.

The positive control well (A1) includes reference RNA without any tissue.

The negative control well (D2) has a tissue section not exposed to permeabilization reagents. Permeabilization times refer to the length of time tissue sections are exposed to permeabilization reagent.

To prevent evaporation during permeabilization, the entire Slide Cassette is sealed with the Slide Seal in between reagent addition.



Tap cassette after each reagent addition to ensure uniform coverage. Confirm uniform coverage by checking the underside of the cassette.

Ensure that the Slide Seal is applied lightly to enable subsequent removal and re-application of the seal.

Suggested Permeabilization Times (min)

		1	2
A	Pos	12	
B		30	6
C		24	3
D	18		Neg

Slide Seal Application



1.1 Tissue Permeabilization

Retrieve the Visium Tissue Optimization Slide with **fixed & stained** tissue sections. If a coverslip was mounted on the slide for imaging, remove the coverslip. Consult the Demonstrated Protocol used for tissue staining for coverslip removal instructions. Ensure Permeabilization Enzyme is resuspended and is maintained at **37°C**.



If Methanol Fixation, Immunofluorescence Staining & Imaging was performed (CG000312), the slide will be in the Slide Cassette with wash buffer in all wells except the positive control (A1). Using a pipette, remove wash buffer from the wells sequentially to correspond with immediate addition of Permeabilization Enzyme as described in step e. The negative control well (D2) should be left with wash buffer throughout the permeabilization time course. The positive control well (A1) should remain dry.

- a. Place a Thermocycler Adaptor in the thermal cycler. Prepare a thermal cycler with the following incubation protocol and start the program.

Lid Temperature		Run Time
37°C (may be 50°C if instrument does not enable 37°C)		*
Step	Temperature	Time
Pre-equilibrate	37°C	Hold
Permeabilization	37°C	Hold



- b. Place the slide in the Slide Cassette. See Tips & Best Practices. Practice with a blank slide. Skip this step if Methanol Fixation, Immunofluorescence Staining & Imaging was performed.
- c. **Positive control (A1, no tissue):** Add 2 μ l RNA (1 μ g/ μ l) to the center of the dry well. DO NOT add Permeabilization Enzyme.
- d. **Negative Control (D2):** DO NOT add Permeabilization Enzyme.



- e. **Permeabilization Time Course:**

Permeabilization Times (min)

- Add 70 μ l Permeabilization Enzyme to B1 along the side of the well (30 min) and tap cassette.
- Apply Slide Seal to the Slide Cassette and place on the Thermocycler Adaptor at 37°C. Close lid.
- After 6 min, remove the Slide Cassette from Thermocycler Adaptor and remove seal.
- Add 70 μ l Permeabilization Enzyme along the side of the well to C1, **reapply the seal**, and incubate on the Thermocycler Adaptor at 37°C with the lid closed.
- Repeat process, working backwards to the shortest incubation time (C2, 3 min).



- f. Remove Slide Cassette from the Thermocycler Adaptor after time course completion.
- g. Using a pipette, remove reagents from each well except the positive control well (A1) without touching the tissue sections.
- h. Add 100 μ l 0.1X SSC to all wells except the positive control (A1).

1.2 Fluorescent cDNA Synthesis

- a. Place a Thermocycler Adaptor in the thermal cycler. Prepare a thermal cycler with the following incubation protocol and start the program.

Lid Temperature	Reaction Volume	Run Time
53°C	-	45 min

Step	Temperature	Time
Pre-equilibrate	53°C	Hold
cDNA Synthesis	53°C	00:45:00
Hold	4°C	-

- b. Prepare Fluorescent RT Master Mix on ice. Pipette mix 10x and centrifuge briefly.

Fluorescent RT Master Mix <i>Add reagents in the order listed</i>	PN	Volume/slide + 10% (µl)
Nuclease-free water	-	221.8
● RT Reagent C <i>Minimize light exposure</i>	2000215/ 2000377	110.0
● Template Switch Oligo	3000228	30.8
○ Reducing Agent B	2000087	8.8
● RT Enzyme D	2000216/ 2000294	68.6
Total	-	440

- c. Using a pipette, remove 0.1X SSC from each well.
- d. Add 50 µl Fluorescent RT Master Mix to each well, ensuring that the well surface is uniformly covered with the Master Mix.
- e. Apply Slide Seal on the Slide Cassette firmly and place on the Thermocycler Adaptor on the pre-heated thermal cycler. Close thermal cycler lid.
- f. Skip Pre-equilibrate to initiate cDNA Synthesis.

Step 2

Tissue Removal

- 2.1 Tissue Removal
- 2.2 Slide Imaging



2.0 Tissue Removal

CHECKLIST – GET STARTED!					
Item	10x PN	Preparation & Handling		Storage	
Equilibrate to room temperature					
<input type="checkbox"/> Tissue Removal Buffer	2000221/ 2000378	Pipette mix, verify no precipitate. If necessary, heat at 50°C for 5 min to remove precipitate.		Ambient	
<input type="checkbox"/> Tissue Removal Enzyme	3000387	Vortex, centrifuge briefly.		Ambient	
Obtain					
<input type="checkbox"/> Thermocycler Adaptor	3000380	-		Ambient	
<input type="checkbox"/> Slide Seals	3000279	-		Ambient	
Prepare					
<input type="checkbox"/> 2X SSC/0.1% SDS (can be prepared ahead of time)	2X SSC/0.1% SDS		Stock	Final	45 ml (2 slides)
	<i>Pre-warm to 50°C for at least 30 min prior to step 2.1n. Store at room temperature.</i>				
	SSC	20X	2X	4.5 ml	
	SDS	10%	0.1%	450 µl	
	Water (Ultrapure/Milli-Q)	-	-	40.05 ml	
<input type="checkbox"/> 0.2X SSC (can be prepared ahead of time)	0.2X SSC		Stock	Final	45 ml (2 slides)
	<i>Store at room temperature</i>				
	SSC	20X	0.2X	450 µl	
	Water (Ultrapure/Milli-Q)	-	-	44.55 ml	
<input type="checkbox"/> 0.1X SSC (can be prepared ahead of time)		Prepared in step 1.0.			

2.1 Tissue Removal & Slide Imaging

- a. Place a Thermocycler Adaptor in the thermal cycler. Prepare a thermal cycler with the following incubation protocol and start the program.

Lid Temperature	Reaction Volume	Run Time
56°C	-	60 min

Step	Temperature	Time
Pre-equilibrate	56°C	Hold
Tissue Removal	56°C	00:60:00
Hold	22°C	up to 24:00:00

- b. Prepare Tissue Removal Mix. Pipette mix 10x (pipette set to 600 µl), centrifuge briefly, and maintain at room temperature.

Tissue Removal Mix <i>Prepare Fresh</i> <i>Add reagents in the order listed</i>	PN	Volume/slide + 10% (µl)
Tissue Removal Buffer	2000221/ 2000378	539
Tissue Removal Enzyme	3000387	77
Total	-	616

- c. Remove the Slide Cassette from the Thermocycler Adaptor and place on a flat, clean work surface.
- d. Remove the Slide Seal and using a pipette, remove Fluorescent RT Master Mix from the wells.
- e. Add **100 µl** 0.1X SSC to each well.
- f. Using a pipette, remove 0.1X SSC from each well.
- g. Add **70 µl** Tissue Removal Mix to each well without introducing bubbles. Ensure uniform tissue coverage.
- h. Apply Slide Seal on the Slide Cassette and place on the Thermocycler Adaptor. Close the thermal cycler lid.
- i. Skip Pre-equilibrate step to initiate Tissue Removal.
- j. Dispense **45 ml** 2X SSC-0.1% SDS in a 50-ml centrifuge tube and pre-warm to **50°C** in a water bath or heat block for at least **30 min**.
- k. Dispense **45 ml** 0.2X SSC, and **45 ml** 0.1X SSC buffers in two separate 50-ml centrifuge tubes and maintain at **room temperature**.
- l. At the end of incubation, remove the Slide Seal and using a pipette, remove Tissue Removal Mix from wells.



m. Remove the slide from the Slide Cassette. See Tips and Best Practices for more information.

n. Immerse the slide 15x in the pre-warmed 2X SSC-0.1% SDS.

o. Immerse the slide 15x in the 0.2X SSC.

p. Immerse the slide 15x in the 0.1X SSC. Wipe the back of the slide with a laboratory wipe.



q. Centrifuge for **30 sec** in a slide spinner. Alternatively, use a 50-ml centrifuge tube in a swinging bucket centrifuge and spin at **250 rcf** for **30 sec**.

DO NOT exceed **250 rcf**, as slides may break at higher speeds.

r. Verify that there is no remaining tissue on the slide.

Proceed to imaging.

OPTIONAL: A coverslip may be mounted on the slide before imaging. See [Appendix](#) for Coverslip Application & Removal protocol.

2.2 Slide Imaging



- Image all Capture Areas together using the same fluorescence settings (see Imaging Guidelines).

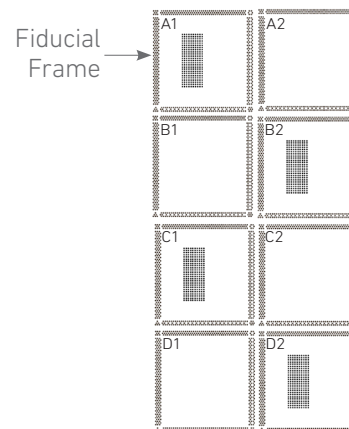
Imaging Guidelines

3

Imaging Guidelines

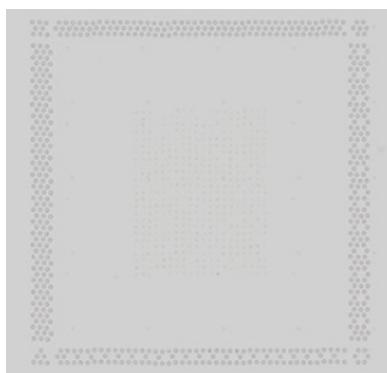
- Consult the Visium Spatial Gene Expression Imaging Guidelines Technical Note (CG000241) for complete guidelines.
- Before imaging, verify microscope settings using the Visium Imaging Test Slide (PN-2000235). Refer to Imaging System Recommendations in the Introduction for settings.

- The Visium Imaging Test Slide has eight areas surrounded by a fiducial frame. Four areas contain spots with fluorescent oligonucleotides (A1, B2, C1, D2)
- DO NOT touch or wipe the active side of the slide.

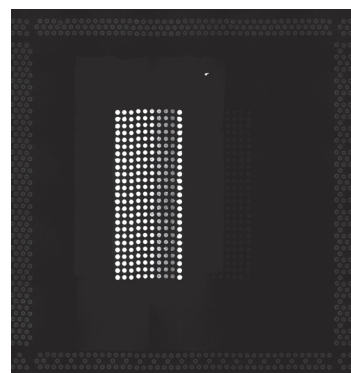


- Fiducial frames should appear clear and in focus under brightfield settings. Fluorescent spots should appear clear and in focus under fluorescence settings.

Brightfield Image



Fluorescent Image



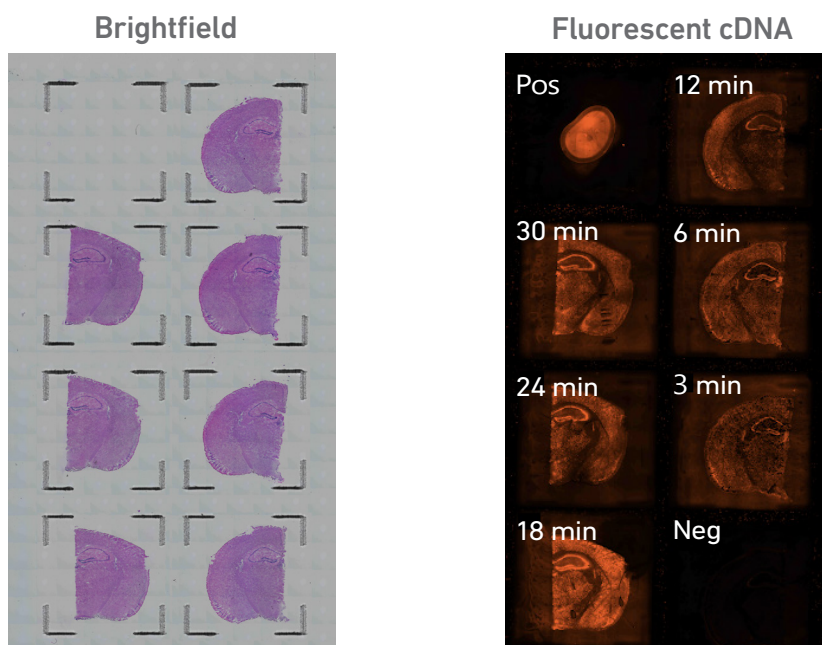
- The Visium Imaging Test Slide is also used to pre-define appropriate x and y-axis offsets before imaging Capture Areas.
- Once settings are verified, proceed with the Visium Spatial Tissue Optimization workflow.
- During brightfield and fluorescence imaging, image all eight Capture Areas at once without using autoexposure.
- A coverslip may be mounted on the slides to enhance optical quality. Although imaging without a coverslip is sufficient to visualize the tissue morphology, some imaging systems require the use of coverslips. See [Appendix](#) for Coverslip Application & Removal protocol.

- After fluorescence imaging, select the permeabilization time that results in the maximum fluorescence signal with the lowest signal diffusion. If the signal is the same at two time points, the longer permeabilization time is considered optimal. This assessment may be performed visually and does not require computational image analysis.
- Compare fluorescence images with brightfield images to ensure that a lack of fluorescence signal is due to insufficient permeabilization, not missing tissue.
- After selecting the optimum permeabilization condition, proceed to the Visium Spatial Gene Expression Reagent Kits User Guide (CG000239).

Imaging Examples

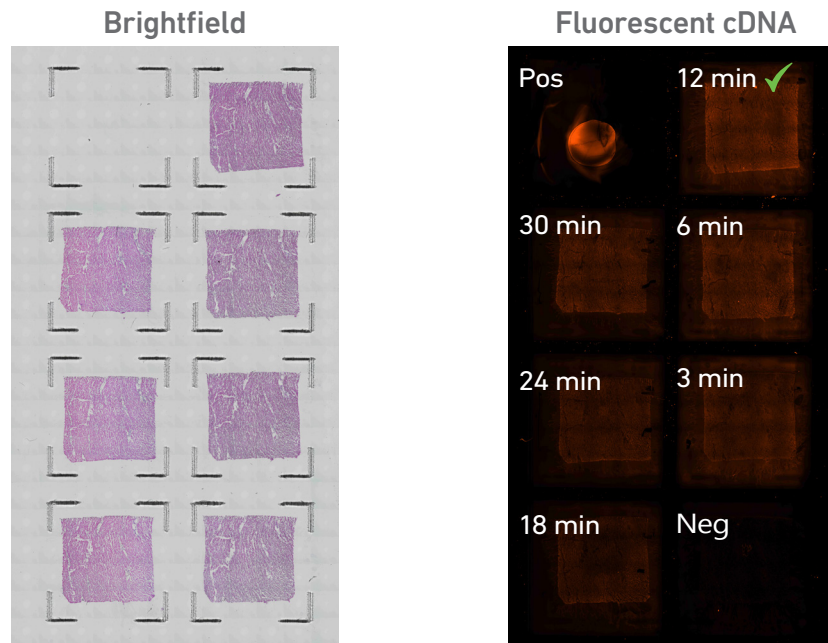
Example 1: Mouse Brain

- Fluorescence image was taken with a Nikon Eclipse Ti2 microscope with the following settings: TRITC filter cube, 200 ms exposure, 75% Sola pad.
- The negative control shows no fluorescence signal, while the positive control shows a strong signal. Low signal after 3-12 min of permeabilization suggests insufficient permeabilization.
- **18 min** permeabilization time was chosen for the Visium Spatial Gene Expression workflow.



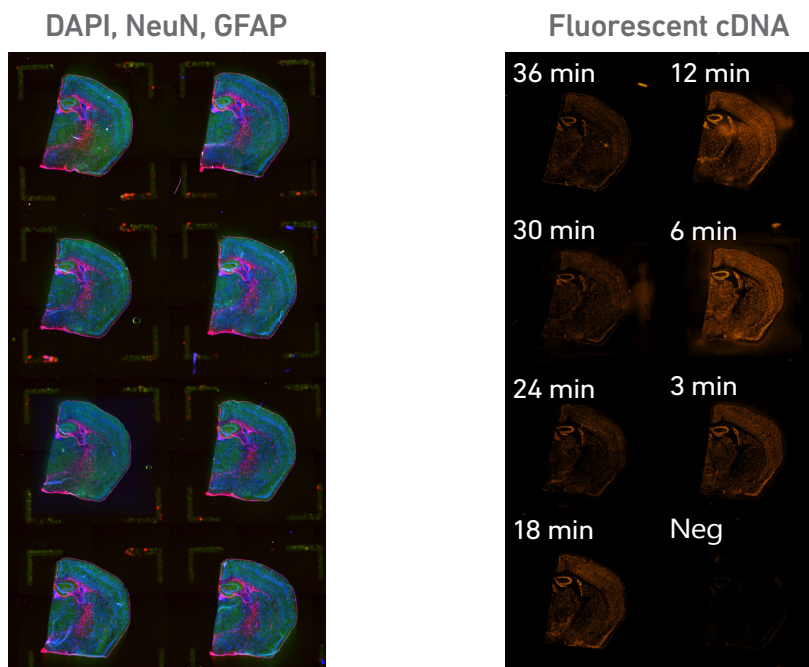
Example 2: Human Heart

- Fluorescence image was taken with a Nikon Eclipse Ti2 microscope with the following settings: TRITC filter cube, 300 ms exposure, 75% Sola pad.
- Although fluorescence signal is dim, this permeabilization time course is considered successful. Dim fluorescence signal is expected due to low RNA content.
- 12 min of permeabilization was selected for the Visium Spatial Gene Expression workflow.



Example 3: Immunofluorescence Stained Mouse Brain

- Fluorescence images were taken with a Nikon Eclipse Ti2 microscope with the following settings:
 - DAPI: DAPI filter cube, 90 ms exposure, 100% Sola pad, 7.6x gain
 - GFAP: FITC filter cube, 600 ms exposure, 100% Sola pad, 6.2x gain
 - NeuN: TRITC filter cube, 700 ms exposure, 100% Sola pad, 9.3x gain
 - cDNA: TRITC filter cube, 300 ms exposure, 100% Sola pad, 7.6x gain
- Antibodies used:
 - Green: NeuN-Alexa 594, Abcam, PN: ab207279, clone EPR12763
 - Red: GFAP-Alexa 488, Abcam, PN: ab194325, clone EPR1034Y
- Both antibodies were used at a 1:100 dilution (0.25 ug/sample).
- A positive control was not used in this example.
- 6 min of permeabilization was selected for the Visium Spatial Gene Expression workflow.



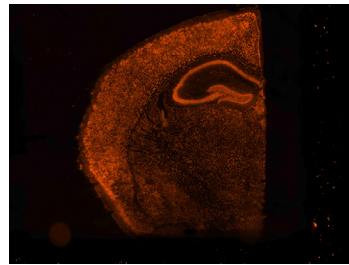
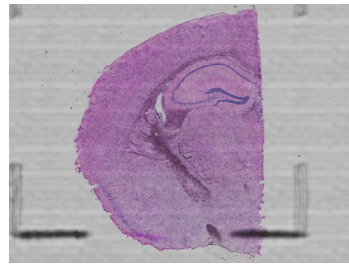
Troubleshooting



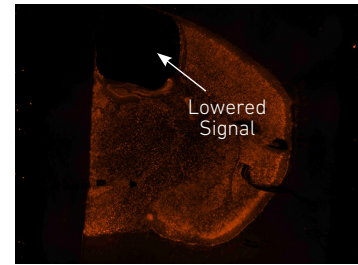
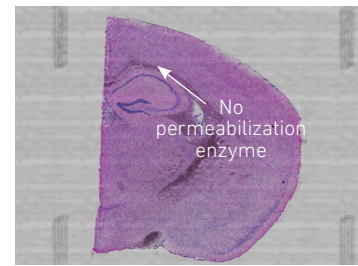
4

STEP	CORRECT	INCORRECT
------	---------	-----------

1.1
After tissue permeabilization



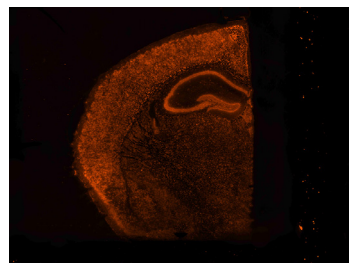
Tissue is fully permeabilized



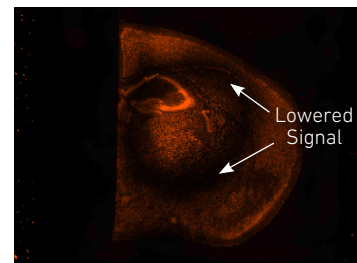
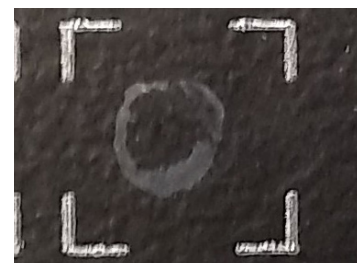
Tissue partially permeabilized

Uneven permeabilization may result in lowered fluorescence signal. Ensure that permeabilization reagents are applied to the tissue evenly at each step. A gentle tap may help spread the reagent more evenly.

2.1
Insufficient Slide Centrifugation after Tissue Removal



Sufficiently centrifuged slide



Insufficiently centrifuged slide

Insufficient slide centrifugation may result in deposits left on the slide, resulting in lowered fluorescence signal. Rinse slide 15x with 0.1X SSC and centrifuge for **30 sec** in a slide spinner or spin in a 50-ml centrifuge tube in a swinging bucket centrifuge at **250 rcf** for **30 sec**. Areas of the image with overlapping deposits should be excluded during analysis.

STEP	NOTES
2.1 Tissue still visible after tissue removal	<ul style="list-style-type: none">Repeat SSC wash steps (step 2.1n-r). Ensure that 2X SSC/0.1% SDS is pre-warmed to 50°C prior to repeating washes.
2.2 No Signal in RNA Positive Control	<ul style="list-style-type: none">Verify that RIN score of positive control ≥ 7. Low quality RNA will result in weak fluorescent signal.Verify that permeabilization enzyme was not added to the positive control well at step 1.1e.Verify that 0.1X SSC was not added to the positive control well at step 1.1h.Verify fluorescence imaging settings with the Visium Imaging Test Slide.
2.2 Tissue fluorescence cannot be distinguished from background	<ul style="list-style-type: none">Verify that RIN score of tissue block ≥ 7. Low quality RNA will result in weak fluorescent signal.Permeabilization time may have been insufficient. Repeat permeabilization time course with longer time increments.Tissue may not be compatible with methanol fixation.Verify fluorescence imaging settings with the Visium Spatial Test Slide.

Appendix

5

Coverslip Application & Removal

A coverslip may be mounted on the slides before imaging to enhance optical quality. Although imaging without a coverslip is sufficient to visualize the tissue morphology, some imaging systems require the use of coverslips.

If using a coverslip, follow this application and removal protocol to ensure that the tissue sections and the Capture Areas are not damaged.

Items

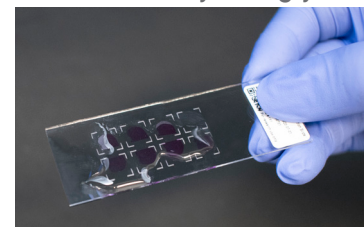
- Large Coverslip** (Thermo Scientific 24 x 60 mm PN:22-050-233; Alternative, 24 x 50mm PN:22-050-232)
- Milli-Q water (800 ml)**
- Laboratory Wipes**
- Forceps**
- 85% Glycerol**
- (Prepare **5 ml** - add **4.25 ml** 100% glycerol and **750 μ l** Milli-Q water to a 50-ml centrifuge tube and vortex. Wait for bubbles to dissipate or centrifuge at **300 rcf** for **1 min** before use).

Application

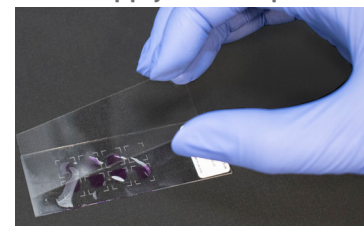
Prior to mounting the coverslip, ensure that the sample and the slide with the tissue sections are dry. Moisture on the surface of the slide may dissolve the glycerol, resulting in faulty mounting.

- i. Add **200 μ l** 85% glycerol to cover the tissue sections on the slide uniformly. If necessary, hold the slide at an angle for uniform coverage.
- ii. Apply the coverslip at an angle on one end of the slide. Slowly lower the coverslip, pressing down gently with forceps, without introducing bubbles.
- iii. Remove excess glycerol by placing one long edge of the slide on a laboratory wipe, and gently tilt the slide back and forth. Repeat with the second long edge of the slide. Repeat the process until the coverslip is secured.
- iv. After the coverslip is secured, **immediately** proceed with imaging.
DO NOT let the attached coverslip dry.
DO NOT use Cytoseal or nail polish for securing the coverslip.

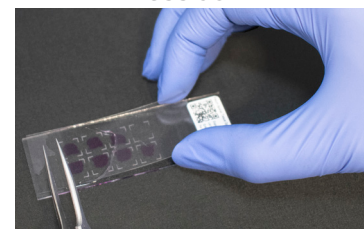
Cover uniformly with glycerol



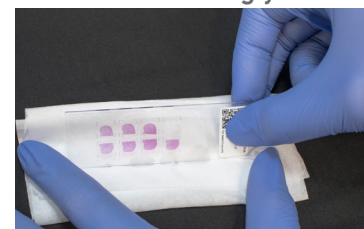
Apply coverslip



Press down



Remove excess glycerol



Coverslip Application & Removal

Removal

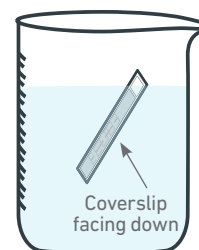
Remove the coverslip **immediately** after imaging is complete. Coverslip removal is not required, but recommended if slide storage is necessary.

- i. Dispense **800 ml** Milli-Q water in a beaker.
- ii. Immerse the slide at $\sim 45^\circ$ angle in the water with the coverslipped surface fully submerged and facing down.
- iii. Hold the slide in water until the coverslip slowly separates away from the slide.

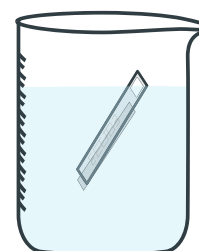
DO NOT move the slide up and down or shake forcibly to prevent damaging the Capture Areas.

- iv. Once the coverslip is detached, remove slide and immerse the slide at $\sim 90^\circ$ in the water 1x to remove any residual glycerol.
- v. Air dry slide at **room temperature**.

Immerse in water



Hold in water



Coverslip detaches

