

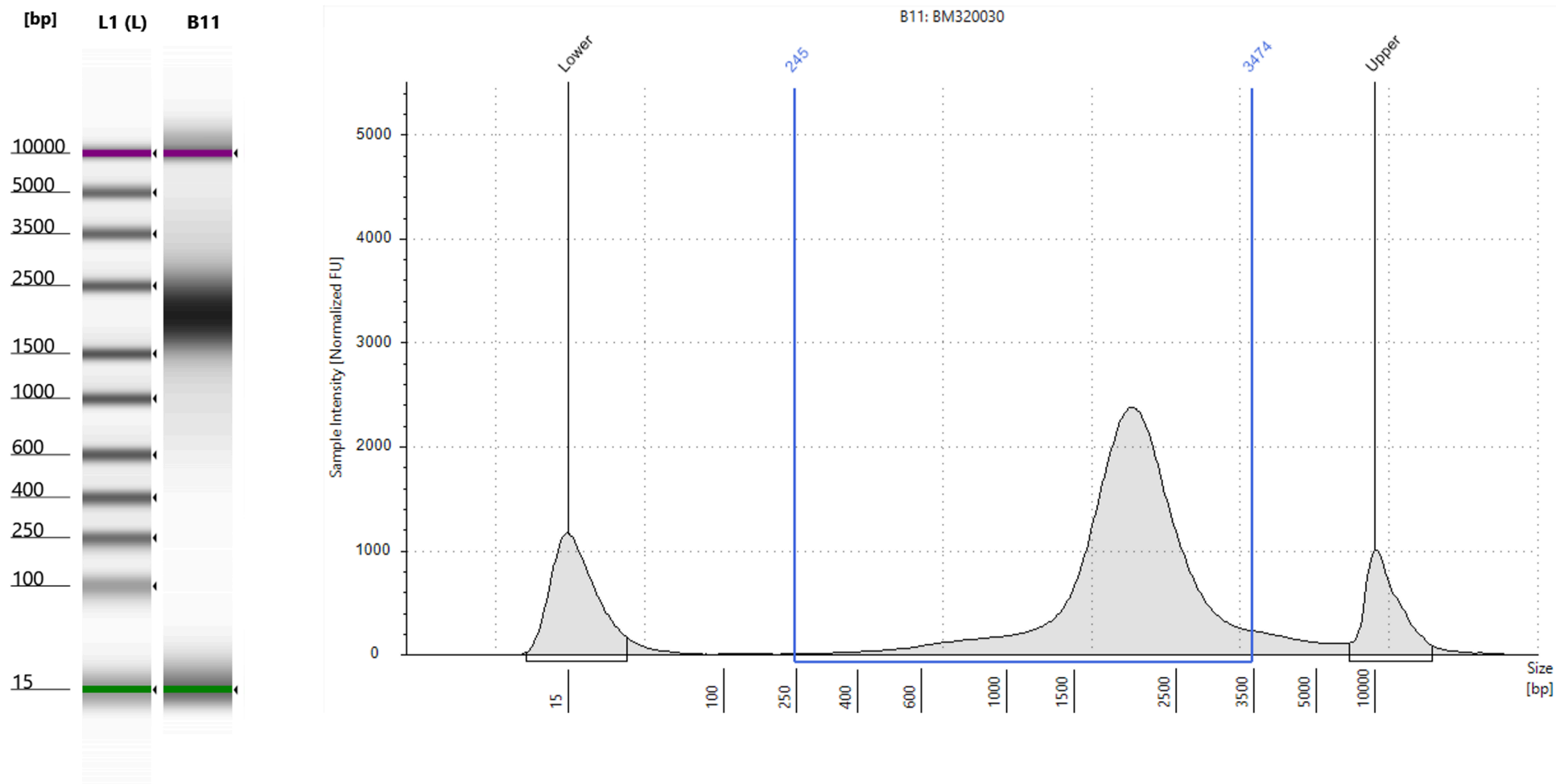
# **INVADEseq to identify cell-adherent or invasive bacteria and the associated host transcriptome at single-cell-level resolution**

In the format provided by the authors and unedited

# **INVADEseq to identify cell-adherent or invasive bacteria and the associated host transcriptome at single-cell-level resolution**

---

In the format provided by the authors and unedited



**Supplementary Figure 1:** Bacterial enrichment library size distributions.

Example of pseudo-gel image (left) and the corresponding trace (right) of a bacterial enrichment library from an oral tumor sample processed for INVADeseq.