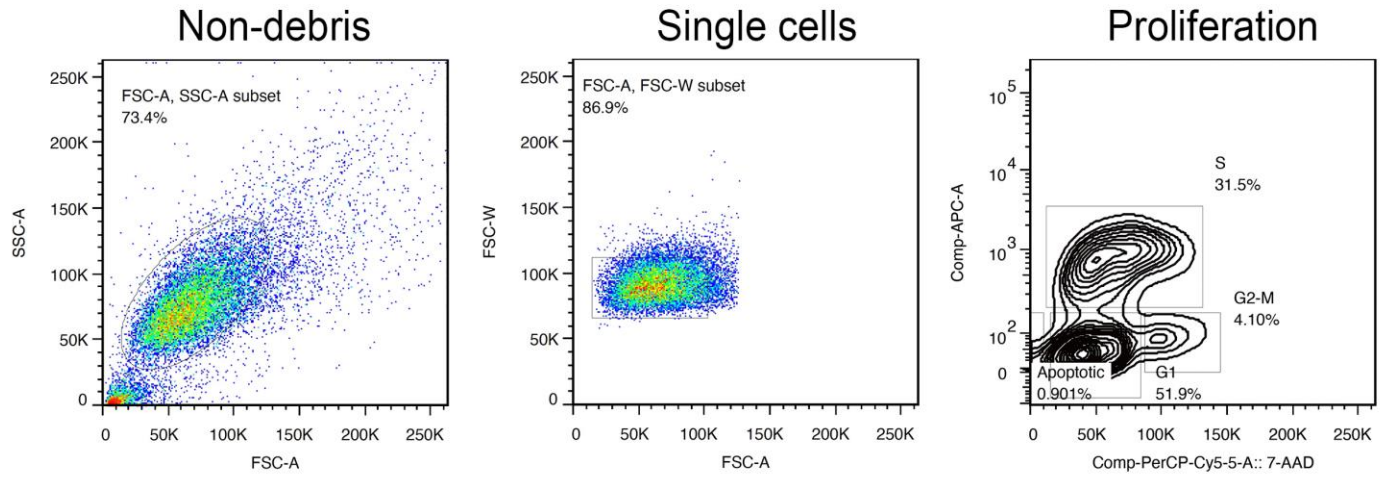

Supplementary information

A distal lung organoid model to study interstitial lung disease, viral infection and human lung development

In the format provided by the
authors and unedited



Supplementary Figure 1. Flow cytometry gating strategy for proliferation analysis. For gating strategy to select for single cells, first gate for non-debris and select for single cells as shown in the above figure. The cell cycle stages of gated cells can be determined by analyzing the correlated expression of total DNA and incorporated BrdU amount.