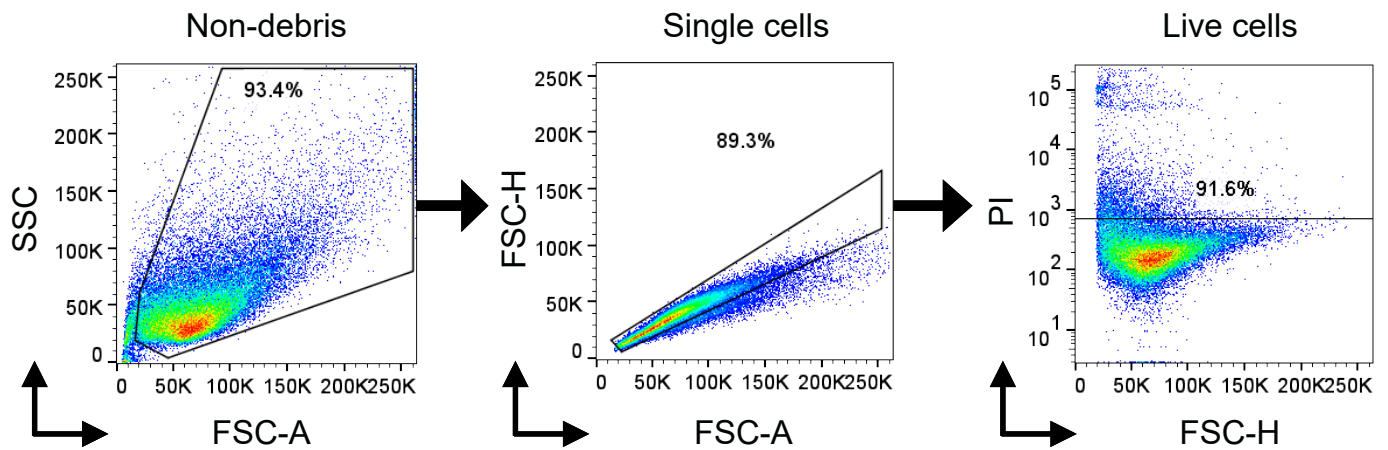

Supplementary information

Establishment of human induced trophoblast stem cells via reprogramming of fibroblasts

In the format provided by the
authors and unedited



Supplementary Fig. 1 | Flow cytometry gating strategy for live cells. For the gating strategy to select for live cells, first gate for non-debris cells (SSC vs FSC-Area(A)) and select for single cells FSC-Height (H) vs FSC-A as shown in the above figure. Finally, select for propidium iodide (PI)-negative cells which represent the live cell populations. Subsequent flow cytometry analysis on respective markers are examined on the gated live cell populations.