

---

**Supplementary information**

---

**Raman spectroscopy for real-time and in situ monitoring of mechanochemical milling reactions**

---

In the format provided by the  
authors and unedited

**Supplementary Information for**  
**Raman spectroscopy for real-time and *in situ* monitoring of**  
**mechanochemical milling reactions**

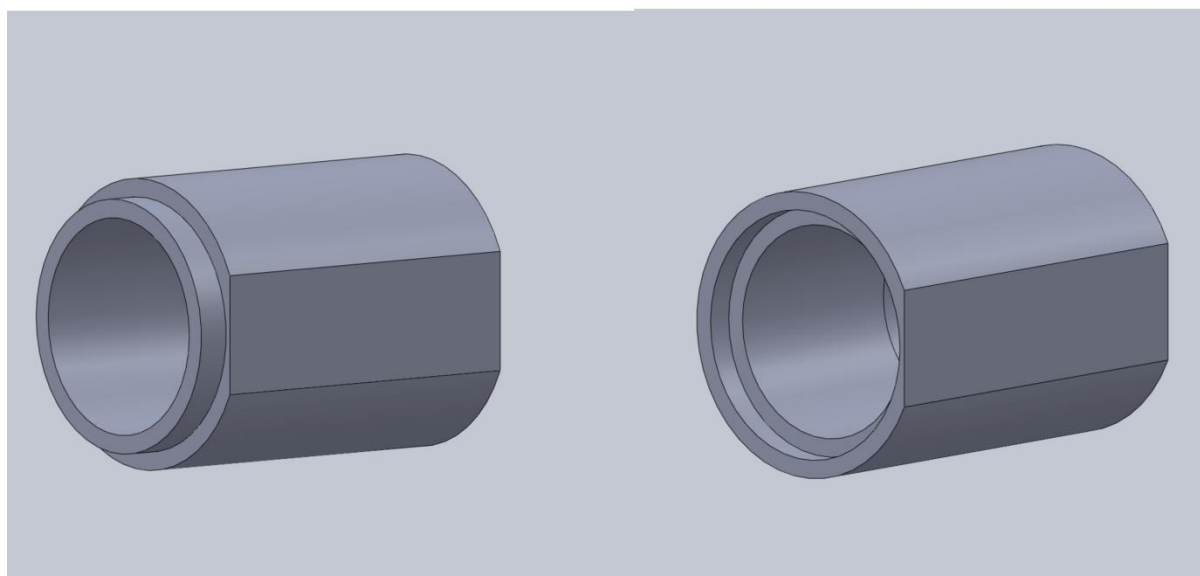
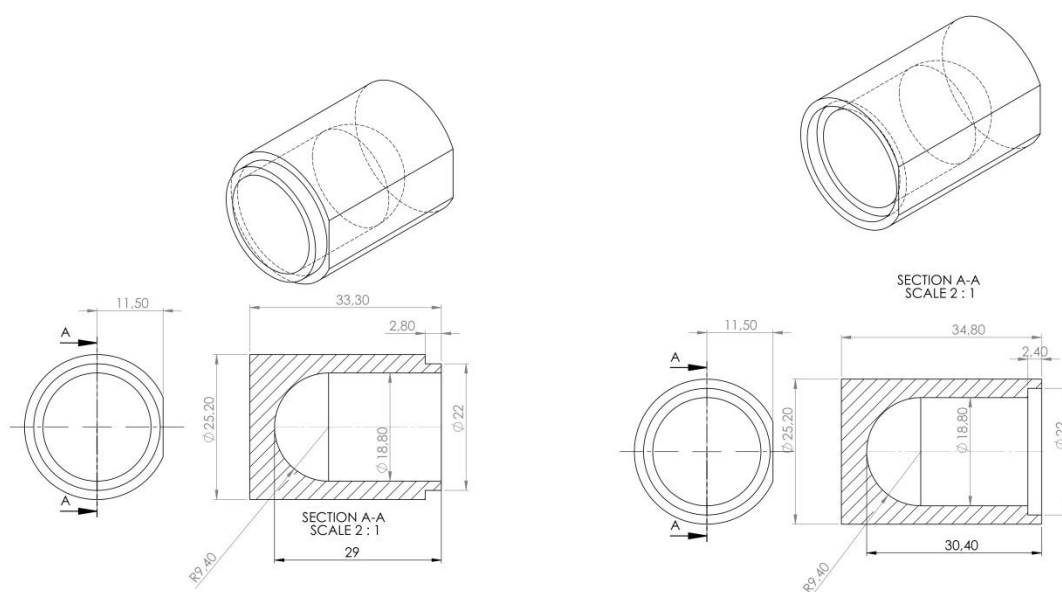
Stipe Lukin<sup>a,\*</sup>, Krunoslav Užarević<sup>a</sup>, Ivan Halasz<sup>a</sup>

<sup>a</sup> Ruđer Bošković Institute, Bijenička cesta 54, 10000 Zagreb, Croatia

Email: [Stipe.Lukin@irb.hr](mailto:Stipe.Lukin@irb.hr), [Krunoslav.Uzarevic@irb.hr](mailto:Krunoslav.Uzarevic@irb.hr), [Ivan.Halasz@irb.hr](mailto:Ivan.Halasz@irb.hr)

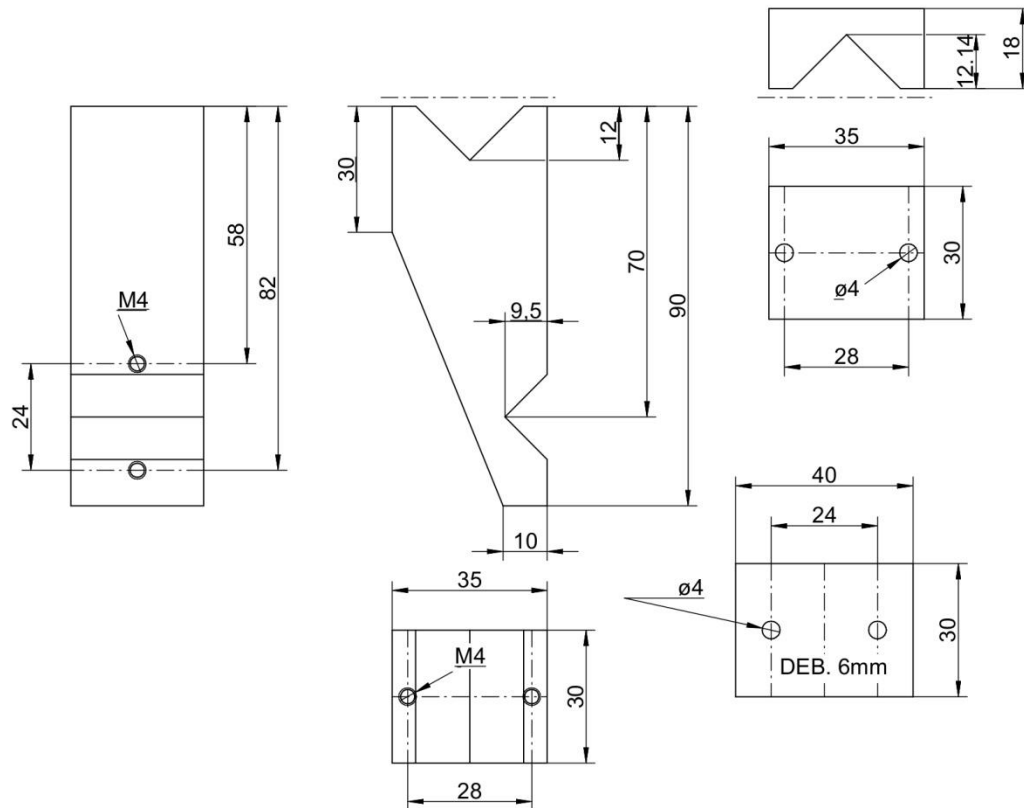
Correspondence should be addressed to S.L.

## Milling jar schematics



Supplementary Figure 1. Schematics and rendering of the in-house designed and build PMMA milling jar for *in situ* monitoring of milling reactions by Raman spectroscopy.

## Raman probe holder schematics



Supplementary Figure 2. Schematics for in-house designed and built Raman probe holder.



Supplementary Figure 3. Close-up of Raman probe holder without and with the mounted probe.