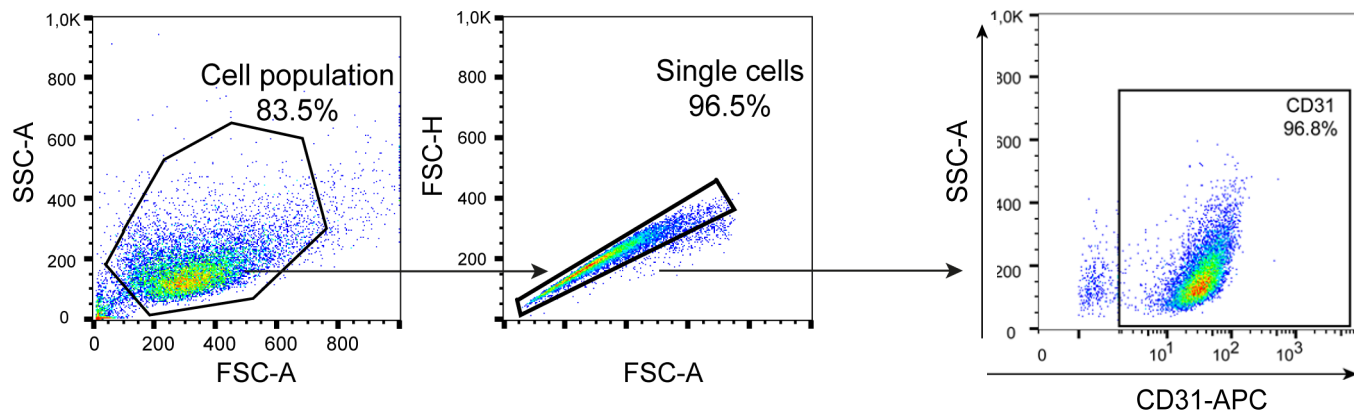

Supplementary information

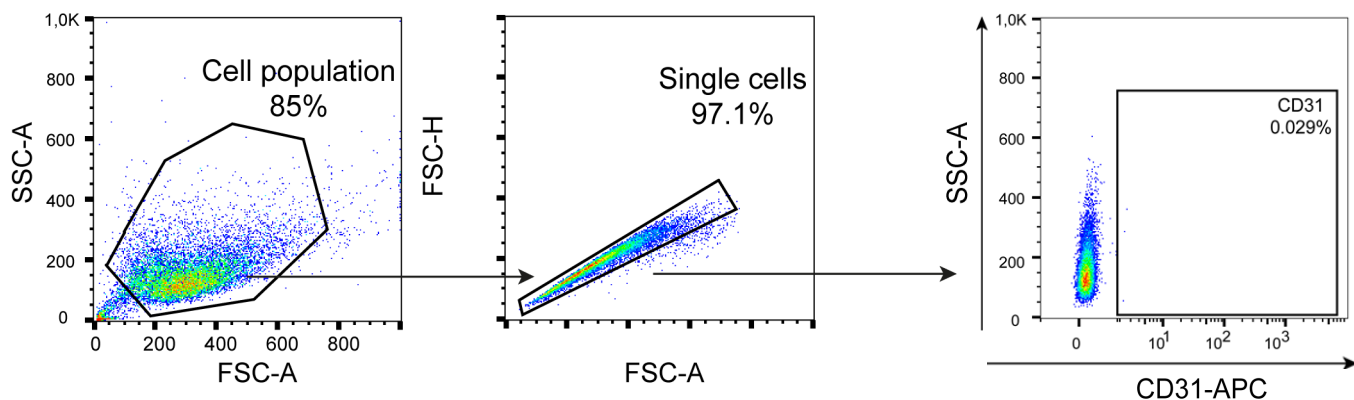
Generation, functional analysis and applications of isogenic three-dimensional self-aggregating cardiac microtissues from human pluripotent stem cells

In the format provided by the
authors and unedited

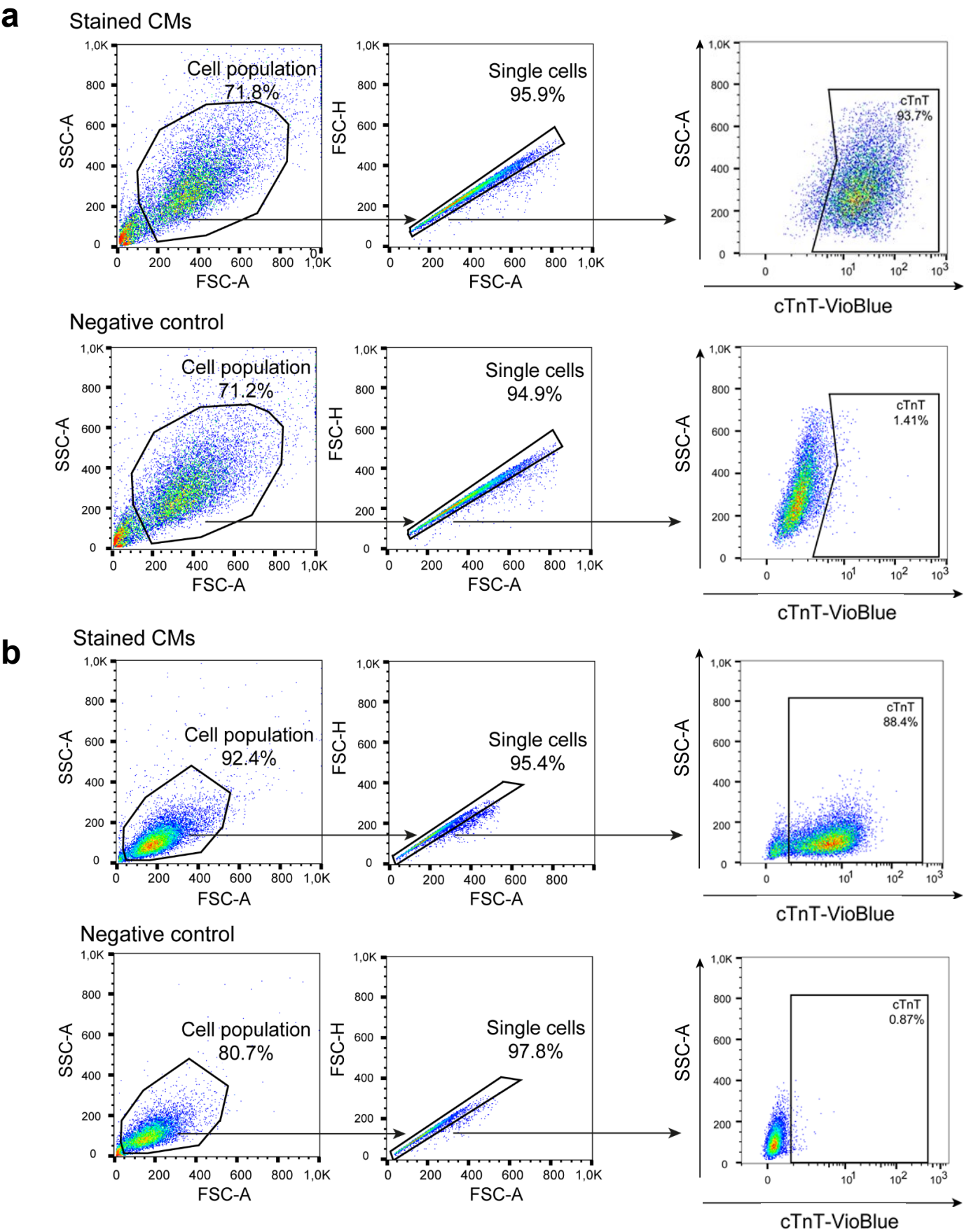
Stained ECs



Negative control

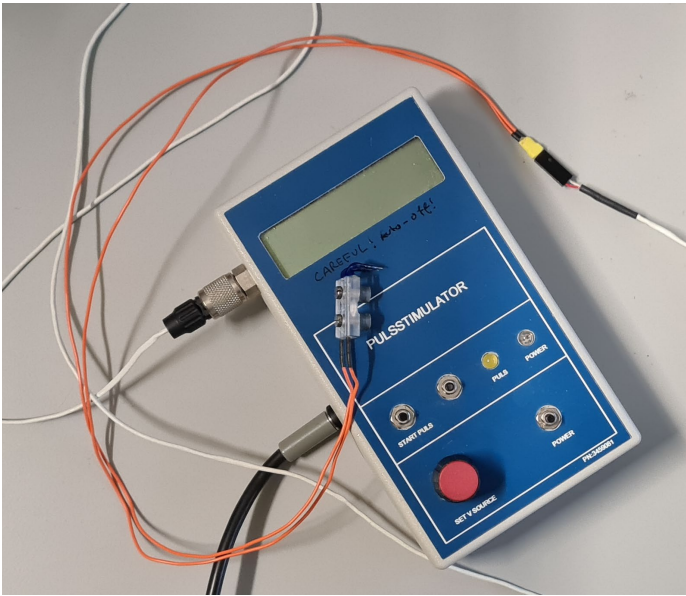


Supplementary Figure 1: Gating strategy used for FACS analysis of hiPSC-ECs. (a) Forward and side scatter dot plots showing the starting cell population, (b) the gating to discriminate single cells and (c) the gating to isolate CD43-APC positive cells with the help of cells stained with isotype control (APC). The percentage of the relevant cell populations are provided. Cells were acquired with a MACSQuant VYB (Miltenyi Biotech) and analyzed with FlowJo Software.

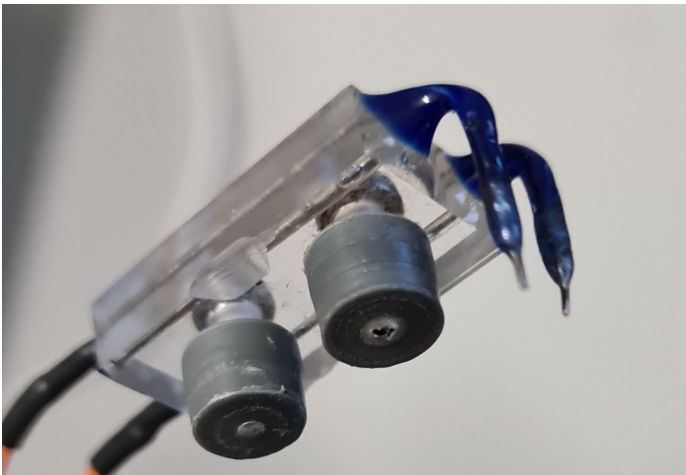


Supplementary Figure 2: Gating strategy used for FACS analysis of hiPSC-CMs. (a) Forward and side scatter dot plots showing the starting cell population, (b) the gating to discriminate single cells and (c) the gating to isolate TNNT-VioBlue positive cells with the help of unstained cells (mBEL) or cells stained with isotype control (VioBlue). The percentage of the relevant cell populations are provided. Cells were acquired with a MACSQuant VYB (Miltenyi Biotech) and analyzed with FlowJo Software.

a



b



Supplementary Figure 3: Equipment used for electrical pacing of cardiac MTs. (a) Pulse stimulator connected to custom-made electrodes fitting the V-shaped 96-wells and (b) details of custom-made electrodes.